

## **Historic, Archive Document**

Do not assume content reflects current scientific knowledge, policies, or practices.

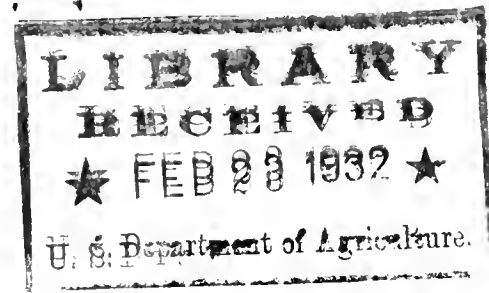


6227

# Square Deal Seed Co.

Corner Seventh and Union Streets

COFFEYVILLE, KANSAS



**Tested, Reliable, Productive**

**Garden and**

**Field Seeds**

*Since 1905*

**Spring  
1932**



Vegetable Seed Trials

FEB 17 1932

# NORTHERN GROWN

## DEPENDABLE GARDEN SEED



### GROW WHAT YOU EAT

Plan on raising more garden this season. You can grow an abundance of fresh, crisp vegetables for immediate needs and besides raise a surplus for canning and winter storage or supply your local market with the best of fresh vegetables.

You will find listed in our catalog all the leading varieties that are especially adapted for this section of the country.

WE HANDLE ONLY TRUE TO NAME selected and tested NORTHERN GROWN BULK vegetable seed, grown by the most reliable growers of pedigreed garden seed. Their purebred quality is not the result of accident or chance. Science and skill have been employed for years to maintain it.

BETTER SEED, BETTER CROPS—Buy your seeds on quality and not on price alone. You can buy seed at almost any price, but cheap seeds are dear at any price. Cheap field seeds will not only fail to make a good stand but many times will foul your farm with

bad weeds. SQUARE DEAL seeds are carefully re-cleaned and tested for purity and germination to comply with the State Pure Seed Law.

MARKET GARDENERS and others who buy vegetable seed in bulk to the amount of \$8.00 or more are requested to send their list of seeds wanted to us, and we will make special wholesale quotations.

ABOUT WARRANTING SEEDS. It is mutually agreed and understood that any seeds or other goods bought from us, may be returned at any time within ten days after receipt, if not satisfactory, and we will refund the money you paid for them; but we cannot and do not in any way warrant the stand or the crops, as they depend on so many conditions beyond our control.

SEEDS BY MAIL. Prices of all packets are postpaid. An ounce or more of seed is NOT postpaid and you should send postage extra at the rate of 1c for each two ounces or fraction thereof up to 8 ounces. Over 8 ounces takes the regular Parcel Post rate.

### BRING US YOUR PLANTING PROBLEMS

I would like to have you call at the store and ask for any information you may want about seeds. If you want any information about what to plant, when to plant, inoculation, fertilizer, liming, etc., we will gladly give you the benefit of our years of experience in the seed business. This costs you absolutely nothing and places you under no obligations. If you can't come to our store this Spring, then write us. I will give your letter my personal attention.



**EVER GREEN**  
Non-Poisonous Insecticide  
**KILLS INSECTS**  
Both Chewing and Sucking Types

## SQUARE DEAL SEED COMPANY

CLYDE FRAZIER, Prop.

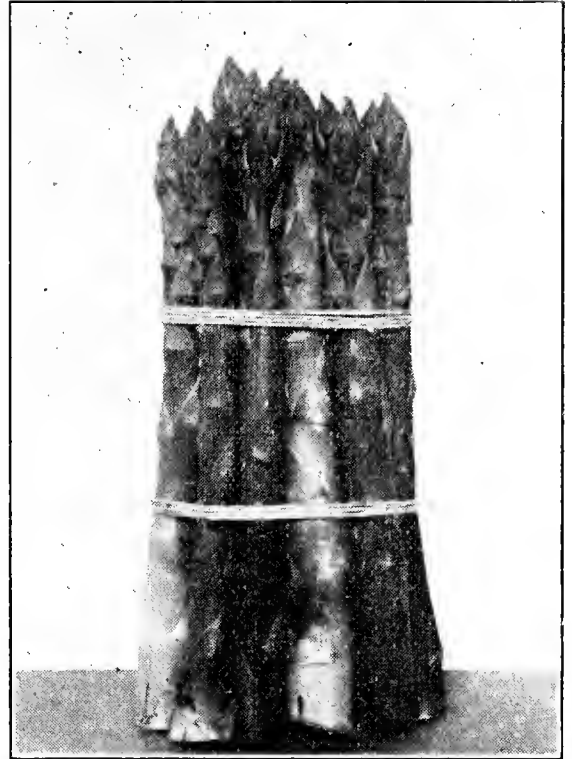
Corner Seventh and Union Streets

Coffeyville, Kansas

# TESTED GARDEN SEEDS

## Asparagus

**MARTHA WASHINGTON**—Also called Mary Washington. Rust-proof and surprisingly superior. Vigorous, high yielding strain of giant Asparagus. Originated at the Massachusetts Experimental Station. It is unquestionably the best asparagus. Pkt. 5c; oz. 15c; ¼ lb. 50c.



Martha Washington Asparagus

## GARDEN BEANS

### Bush—Green Podded



Burpee's Stringless Green Pod

**GIANT STRINGLESS**—This is today the most popular bean of its class and is the staple variety for general purposes. The pods are long, round, thick, free from strings and very meaty. They are long, dark green color, very attractive, and of excellent flavor. The plants are very vigorous and the pods are produced early and in large quantities.

**TENNESSEE GREEN POD**—This dwarf, early, intermediate snap bean is very popular. The vines are large, somewhat spreading, and prolific. The pods are very long—very often six to seven inches, flat, irregular in shape, bright but rather dark green and of excellent quality.

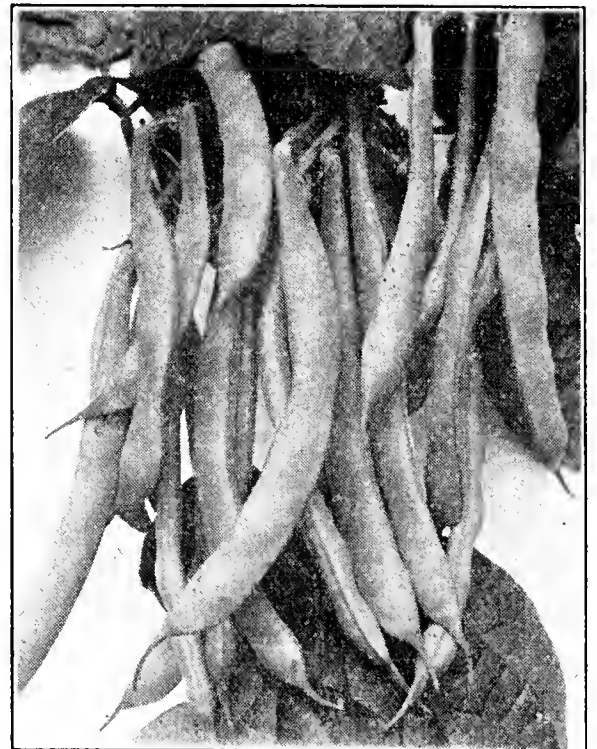
**REFUGEE or 1000 to 1**—The vines are large, spreading, exceedingly hardy, with small, smooth leaves, very late, and bear long, cylindrical green pods of excellent quality. Highly esteemed for late planting.

**BURPEE'S STRINGLESS GREEN POD**—Splendid for market and home garden. Is one of the most popular beans in America. In earliness it is in the lead, in quality it is unexcelled, and as a cropper it is unrivaled. It is stringless in reality as well as name. It is an abundant cropper and pods are thick, round, fleshy and nearly straight.

**EARLY IMPROVED RED VALENTINE**—An old favorite, of which the Stringless Green Pods are an improvement. Very prolific and the pods are fine and round and very tender while young.

### Bush—Wax Podded

**LEONARD'S WEBBER WAX**—Unquestionably one of the best wax podded beans ever introduced. It is a market gardener's bean, having been originated in one of the best market gardening sections of the west. It produces a deep golden colored pod of good length; shape, semi-round, thick meated, stringless and of exceptional quality. Vines strong, holding the pods up well, with good leaf covering and bearing in profusion.



Leonards Webber Wax

**DAVIS' WHITE WAX**—This bean does not discolor, and is therefore excellent for canning. It is immensely productive and a very good shipper. The pods are straight and 5 to 6 inches in length. The dry bean is white and very desirable for winter use.

**PENCIL POD BLACK WAX**—Plant grows about 15 inches high, very productive, with straight pods 6 to 7 inches long, light golden yellow color, round, meaty and deeply saddle-backed; flesh, brittle, solid and stringless; flavor fine.

#### PRICES ON BEANS

If wanted by mail add 7c per single pound and 1c each additional pound.

|                          | Pkt. | 1-lb. | 10-lb. |
|--------------------------|------|-------|--------|
| Giant Stringless .....   | 5    | .25   | 2.25   |
| Tennessee Green Pod..... | 5    | .25   | 2.25   |
| Refugee—1,000 to 1.....  | 5    | .25   | 2.25   |
| Burpees Stringless.....  | 5    | .25   | 2.25   |
| Red Valentine .....      | 5    | .25   | 2.25   |
| Webber Wax .....         | 5    | .25   | 2.25   |
| White Wax .....          | 5    | .25   | 2.25   |
| Black Wax .....          | 5    | .25   | 2.25   |

## GARDEN BEANS—Continued

**IMPROVED GOLDEN WAX**—(Rust Proof). The standard wax bean for years. The pods are large slightly flattened, brittle, quite stringless when young, and of golden wax color.

### Bush Lima Beans

**HENDERSON'S BUSH LIMA**—This bean is about two weeks earlier than the Pole Limas. It needs no stakes and produces an enormous crop of delicious Lima beans. The beans are not large but are borne in great numbers. When planted in late spring, will continue to bear until frost.

**BURPEE'S BUSH LIMA**—Plants eighteen to twenty inches high, very productive. Pods four to four and one-half inches long, containing three to four beans, which are as large as the pole sorts. Beans flat and white.

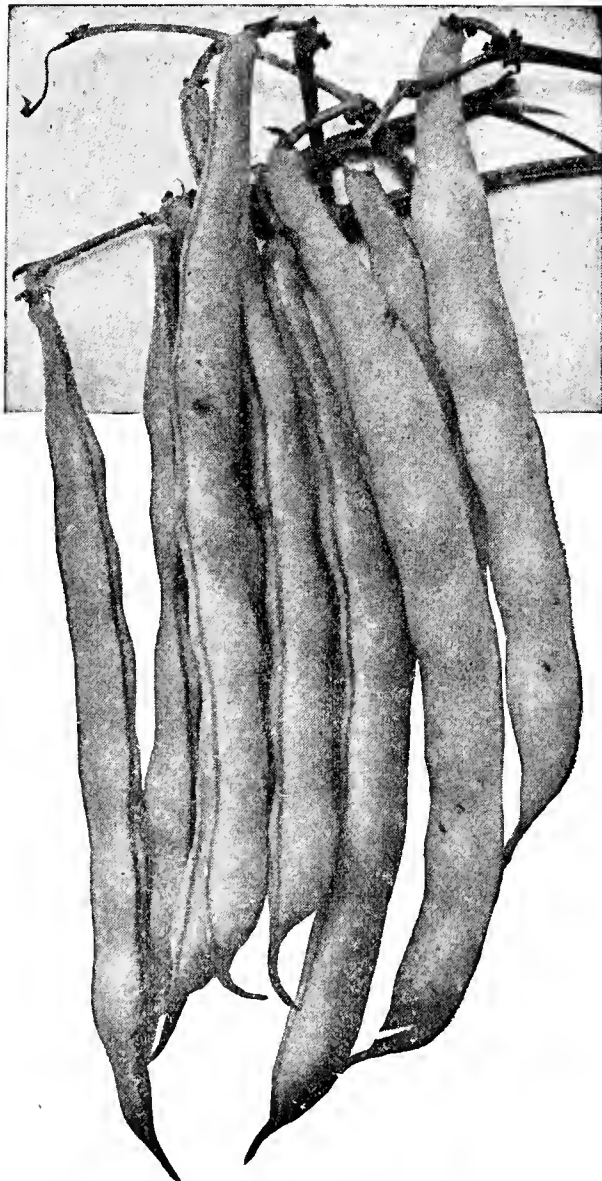
**JACKSON WONDER OR CALICO LIMA**—Most prolific of all bush lima, a perfect bush butter bean growing ten inches high to two feet, good for summer use or winter shell beans.

### Pole Lima Beans

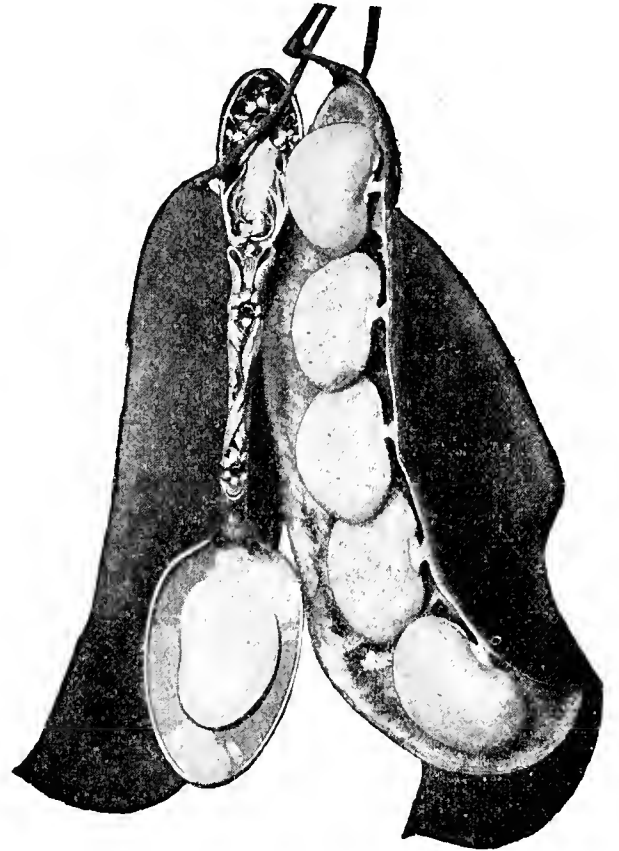
**LARGE WHITE LIMA**—The large lima is a general favorite wherever it can be cultivated on account of its excellent flavor and productiveness.

### Pole Beans

**KENTUCKY WONDER GREEN POD**—Brittle, stringless, meaty, delicious flavor. The plants are vigorous climbers; pods are borne profusely in clusters; they average from seven to nine inches long; are of attractive green color; round and very brittle when young.



Kentucky Wonder Beans



Henderson's Bush Lima Beans

**RED SPECKLED CUTSHORT OR CORN HILL**—The old standard for planting among corn. Pods are short, round and tender.

**DUTCH CASE KNIFE**—One of the earliest of the pole varieties; white seeds; used for snaps; a good winter sort; productive and a good bean for planting among corn.

**BURGER'S STRINGLESS**—Sometimes called white seeded Kentucky Wonders. This bean has surpassed the old Kentucky Wonder, it being earlier and bearing for a longer time. The pods are stringless and up to eight inches long, dark green, very tender, and have a delicious flavor.

**MISSOURI WONDER**—One of the best pole beans for planting in corn. Much larger than Kentucky Wonder and bears until frost. Beautiful dark green pods filled with large beans of excellent flavor.

**KENTUCKY WONDER WAX**—This remarkable vigorous-growing, wax-podded pole bean is very similar to the green-podded Kentucky Wonder, but the very long pods are a little broader, very fleshy, and quite stringless as snaps.

**MEXICAN PINTO**—This is the genuine Pinto bean for field planting. It is grown as a dry shell bean for winter use. Not recommended as a green or snap bean.

### COLLARDS

**IMPROVED GEORGIA**—Plants may be planted at almost any time of the year, and is much hardier than cabbage. Pkt. 5c; oz. 20c.

#### PRICE ON BEANS

If wanted by mail add 7c per single pound and 1c for each additional pound.

|                             | Pkt. | 1-lb. | 10-lb. |
|-----------------------------|------|-------|--------|
| Golden Wax .....            | 5    | .25   | 2.25   |
| Henderson's Bush Lima ..... | 5    | .25   | 2.25   |
| Burpee's Bush Lima .....    | 5    | .35   | 3.00   |
| Jackson's Calico Lima ..... | 5    | .30   | 2.75   |
| Large White Lima .....      | 5    | .30   | 2.75   |
| Ky. Wonder Green Pod.....   | 5    | .25   | 2.25   |
| Red Speckled Cutshort.....  | 5    | .25   | 2.25   |
| Dutch Case Knife .....      | 5    | .25   | 2.25   |
| Burger's Stringless .....   | 5    | .30   | 2.75   |
| Missouri Wonder .....       | 5    | .30   | 2.75   |
| Ky. Wonder Yellow Pod.....  | 5    | .30   | 2.75   |
| Mexican Pinto .....         | 5    | .20   | 1.70   |

### Dill

Every year there is such a demand for green dill that the supply is short of the demand. Make several plantings to have it for market almost constantly and sell what you can of the green dill and dry balance. First planting may be made about May first. Pkt. 5c; oz. 10c.

## Table Beets

**ECLIPSE**—Globe-shaped, deep red roots with sweet fine-grained flesh. Pkt. 5c; oz. 10c; ½ lb. 40c.



Swiss Chard

**IMPROVED EARLY BLOOD TURNIP**—This is a carefully selected strain of Blood Turnip Beet. It is very early, smooth, deep blood red and almost round. Pkt. 5c; oz. 10c; ½ lb. 40c.

**DETROIT DARK RED**—Very popular sort used extensively by market gardeners and home gardeners as well. Matures early. The roots are globular and smooth, tender, firm and crisp. Pkt. 5c; oz. 10c; ½ lb. 40c.

**CROSBY'S EGYPTIAN**—The market gardener's favorite. Fine globe-shaped roots. Pkt. 5c; oz. 10c; ½ lb. 40c.



Detroit Dark Red

## BEETS, Swiss Chard

**SILVER**—This does not make edible roots like regular garden beets, but is grown for the broad white leaf stalks which are bunched and cooked in the same manner as asparagus. The leaves may be cooked like spinach. Pkt. 5c; oz. 15c; ½ lb. 80c.

## Carrots

**DANVER'S HALF LONG CARROT**—Grown largely on account of its great productiveness and adaptability to all classes of soil. Tops medium sized, coarsely divided. The smooth and handsome roots are deep orange, of medium length, tapering uniformly to a blunt point. Flesh, sweet, crisp, and of a deep orange color. This is a popular field variety, and although the roots are shorter, they produce as large a bulk as the longer field sorts. Pkt. 5c; oz. 15c; ½ lb. 45c.

**OXHEART OR GUERANDE**—Of fine table qualities. It is the most desirable sort for growing in soils too hard and stiff for the longer varieties as it does not grow over six inches long, and is easily pulled by hand. Pkt. 5c; oz. 15c; ½ lb. 45c.

**CHANTENAY OR MODEL**—A nice smooth carrot of perfect and uniform shape. A heavy yielder, a fine table quality, five to six inches long and easily dug. The flesh is of deep yellow color, tender and of excellent flavor. Pkt. 5c; oz. 15c; ½ lb. 45c.

## Cauliflower

**LEONARD'S SNOWBALL**—The leading cauliflower in all sections and unquestionably the purest strain of cauliflower seed to be had. Heads uniform, of desirable market size and of snowy whiteness. It is pronounced by expert cauliflower growers, to be the best for both early and late planting. Pkt. 10c; oz. \$1.60.

## Rhubarb

**VICTORIA GIANT**—This is a very large and late variety with round stalks of great length and thickness; produces a succession of stalks the whole season. Pkt. 10c; oz. 20c; ½ lb. 85c.

**RHUBARB ROOTS**—Large two and three year old roots. These make the largest plants of any we have ever seen. Each, 10c; dozen, \$1.00.



Chantenay or Model

## Cabbage--Selected Stock

New Golden Acre  
Cabbage



### COPENHAGEN MARKET—

Very popular with market gardeners. An extra early summer cabbage, matures fully as early as the Early Jersey Wakefield, but produces larger heads. The heads are ball-shaped, mild and firm, with small core, and of splendid quality. Leaves are light green color, tightly folded together, forming a very compact head. Pkt. 5c; oz. 25c; ¼ lb. 85c.

### THE NEW GOLDEN ACRE—

A very fine sort from Denmark. It is very uniform, almost every head could be cut at the same time. Golden Acre matures quicker than any variety known. The head is of medium size, quite round, and is surrounded by a few small outer leaves. It is very firm

and fully equal to any of the late sorts in this respect. Pkt. 10c; oz. 50c; ¼ lb. \$1.50.

**EARLY JERSEY WAKEFIELD**—Small cone-shaped head; matures in 90 to 100 days after planting. Pkt. 5c; oz. 20c; ¼ lb. 70c.

**ALL SEASONS**—One of the best of its class. The heads are fine, solid and of good flavor. Pkt. 5c; oz. 20c; ¼ lb. 55c.

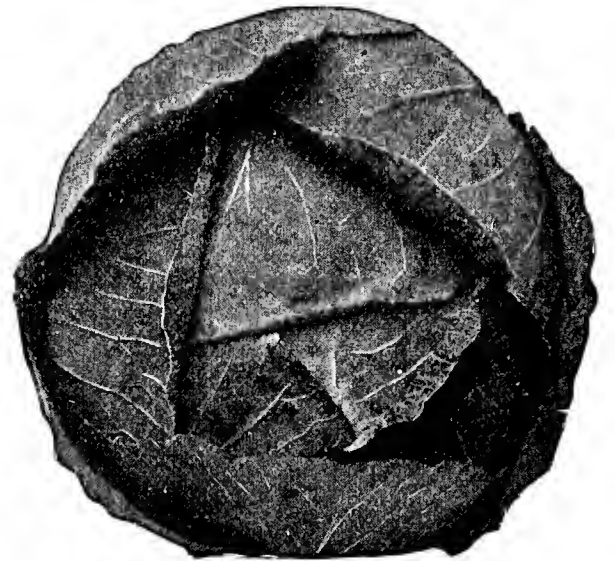
**EARLY WINNINGSTADT**—An early pointed head variety of excellent quality. Pkt. 5c; oz. 20c; ¼ lb. 55c.

**STEINS EARLY DWARF FLAT DUTCH**—This is specially selected early strain of the popular Early Flat Dutch variety. It is very similar to the Early Flat Dutch, but the heads are a little smaller. Pkt. 5c; oz. 20c; ¼ lb. 55c.

**HENDERSON'S EARLY SUMMER**—This variety is about five days later than the Wakefield, being double the size. Pkt. 5c; oz. 20c; ¼ lb. 55c.

**LATE LARGE DRUMHEAD**—An old standard variety. The heads are dark green in color and of excellent quality. Pkt. 5c; oz. 20c; ¼ lb. 55c.

**SUREHEAD**—Strain of Flat Dutch; remarkable for its heading qualities; keeps well and is good for shipping. Pkt. 5c; oz. 20c; ¼ lb. 55c.



Copenhagen Market.

**CHARLESTON WAKEFIELD**—Selection from Early Jersey Wakefield, only it is about one week later than that popular variety, and grows larger heads. Very solid and of fine quality. Pkt. 5c; oz. 20c; ¼ lb. 55c.

**LATE PREMIUM FLAT DUTCH**—A large fall and winter variety, which has proved to be especially adapted to Kansas and the middle west. Pkt. 5c; oz. 20c; ¼ lb. 55c.



Charleston Wakefield

## Chinese Cabbage

**"PEKING PE-TSAI," ALSO CALLED CELERY CABBAGE**—This exceptionally fine vegetable is a native of northern China, and possesses striking characteristics which place it in a class by itself. Grow like Cos-lettuce and when its outer leaves are stripped off shows a picture of lettuce and celery combined. It possesses a very mild flavor. Boiled with beef or pork it is excellent, having a much more pleasing flavor than cabbage. The inner leaves make better cold slaw. Sow seed like a regular cabbage. If for early planting sow in hot bed in February; if for later planting sow early in July. Pkt. 10c; oz. 35c; ¼ lb. \$1.25.



## Cucumbers

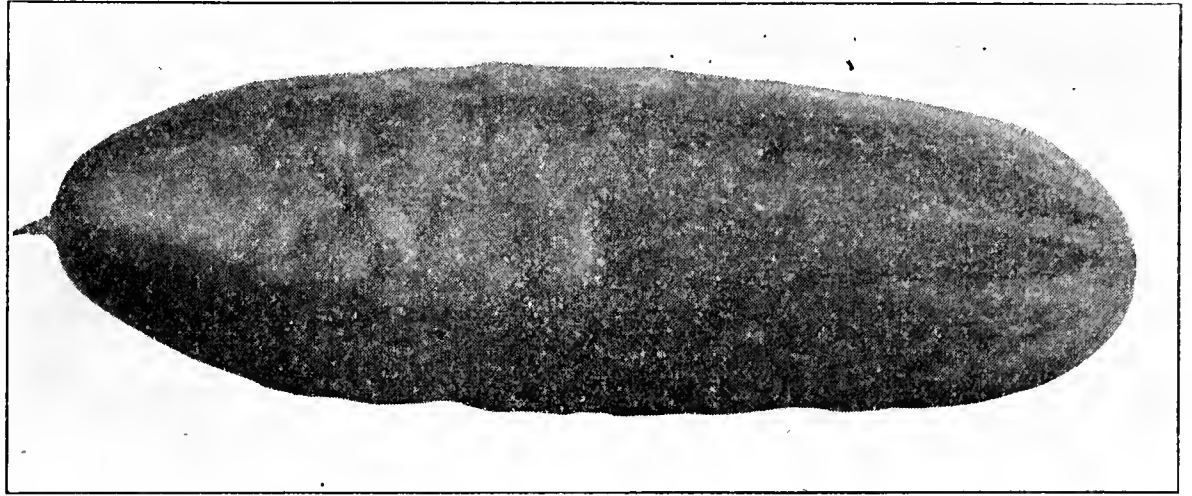
**EARLY FORTUNE** — The finest market cucumber of the White Spine type. The thick flesh is pure white, firm and unusually crisp, with very few seeds. The fruits are of a rich, dark green color. Pkt. 5c; oz. 15c; ½ lb. 65c.

**IMPROVED LONG GREEN** — Most widely cultivated sort, unsurpassed for general use. The cucumbers average 10 inches long when fully developed. Pkt. 5c; oz. 15c; ½ lb. 65c.

**EARLY CLUSTER** — Extra prolific sort; setting its fruit in clusters of two or three. The fruit is a dark green, short and particularly suitable for pickles. Pkt. 5c; oz. 15c; ½ lb. 55c.

**EARLY WHITE SPINE** — Vines vigorous, bearing early and abundantly. Fruit uniformly straight and handsome, dark green, with a few white spines. Pkt. 5c; oz. 15c; ½ lb. 65c.

**DAVIS PERFECT** — A superb variety. Dark glossy green, slim and symmetrical, with an average length of 10 to 12 inches. They hold color till nearly ripe when they turn white without a yellow streak on them. Pkt. 5c; oz. 15c; ½ lb. 75c.



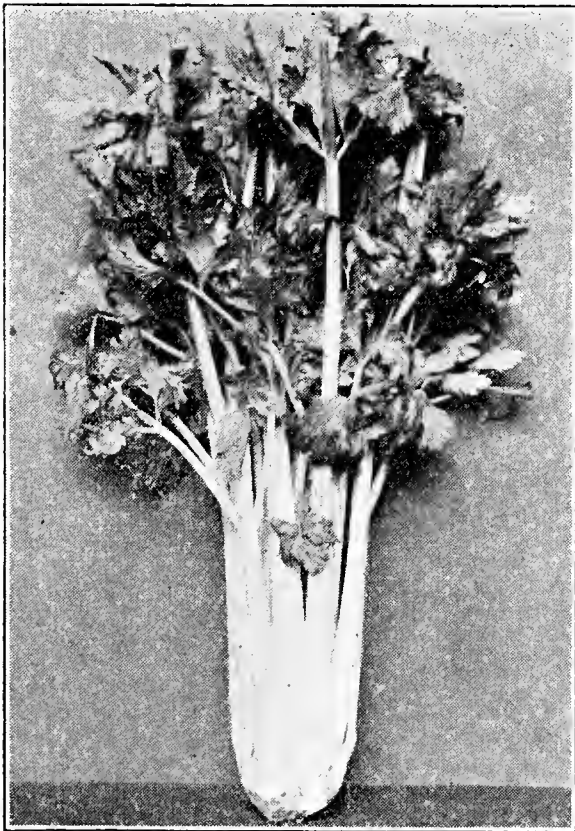
Early Fortune

**CHICAGO PICKLES** — Largely used by pickle manufacturers. Prolific, short, with fruit of medium size, dark green color, and with prominent spines. Pkt. 5c; oz. 15c; ½ lb. 55c.

**WEST INDIA GHERKIN** — A very prolific, small-fruited variety, used exclusively for pickling. It is not properly a cucumber, and is of no value for slicing. The fruits are two to three inches in length, thick and rounded, closely covered with spines. Pkt. 5c; oz. 20c; ½ lb. 75c.

## Celery

**WHITE PLUME** — The earliest and most easily blanched sort. While the inner stalks and heart are of pure white color without being blanched, yet the outer stalks should be tied up and the soil drawn around them, so as to produce attractive bunches. Fine for family use and the local markets. Pkt. 10c; oz. 20c.



White Plume

very popular for greens. It is ready for table or market in 3 to 4 weeks after planting and produces throughout the season. It has the combined flavor of both Mustard and Spinach. Pkt. 5c; oz. 10c; ¼ lb. 35c.

## Mustard

**SOUTHERN GIANT CURLED** — The leaves are twice the size of the ordinary White Mustard and the flavor is sweet and pungent. Pkt. 5c; oz. 10c; ¼ lb. 25c.

**OSTRICH PLUME** — The leaves are long, ruffled and curled like an ostrich plume, and for this reason the plant is very ornamental. Pkt. 5c; oz. 10c; ¼ lb. 25c.

**CHINESE OR SMOOTH LEAF** — The large leaves, which often measure 14 inches, are ready for use in about six weeks after sowing. Leaves are smooth and of a light green color. Pkt. 5c; oz. 10c; ¼ lb. 25c.

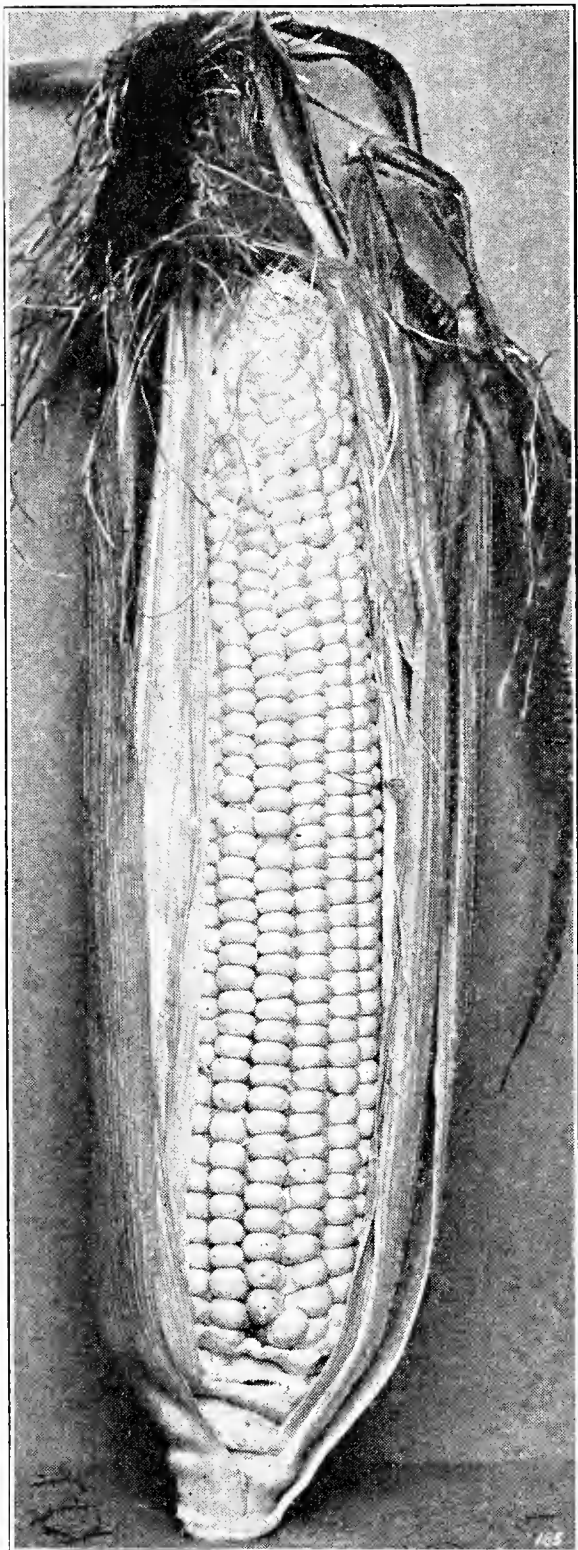
**TENDERGREENS or MUSTARD SPINACH** — A new, quick growing tender leaf, which is fast becoming



Ostrich Plume Mustard



Tendergreens—Mustard Spinach



Early Evergreen.

**DE LUE'S GOLDEN GIANT**—The originator claims that this variety is fully as early as the Golden Bantam, but is of better quality and double the yield. Pkt. 5c; lb. 20c; 2 lbs. 35c; 10 lbs. 1.55.

Treat sweet corn seed with Semesan.

## Sweet Corn

### Northern Grown

**CULTURAL DIRECTIONS**—Corn like anything else well worth having, takes a little care to produce. A few rows of corn will supply the average home with plenty of fine roasting ears and enough over for canning and drying to last through the winter.

Be sure and plant sweet corn every ten days or two weeks and you will have a continuous supply of table corn in the right stage to enjoy the eating of it. Wait until the ground is warm to plant sweet corn. A prolonged cold, rainy spell may cause it to rot in the ground.

**EARLY ADAMS**—Although this is not a true sweet corn, nevertheless it is the most popular "roasting ear" corn for the market garden and home garden as well, as it matures quickly and can be planted much earlier than the wrinkled sugar corn. Also recommended as an early feeding corn for stock. Pkt. 5c; lb. 15c; 2 lbs. 25c; 10 lbs. \$1.00.

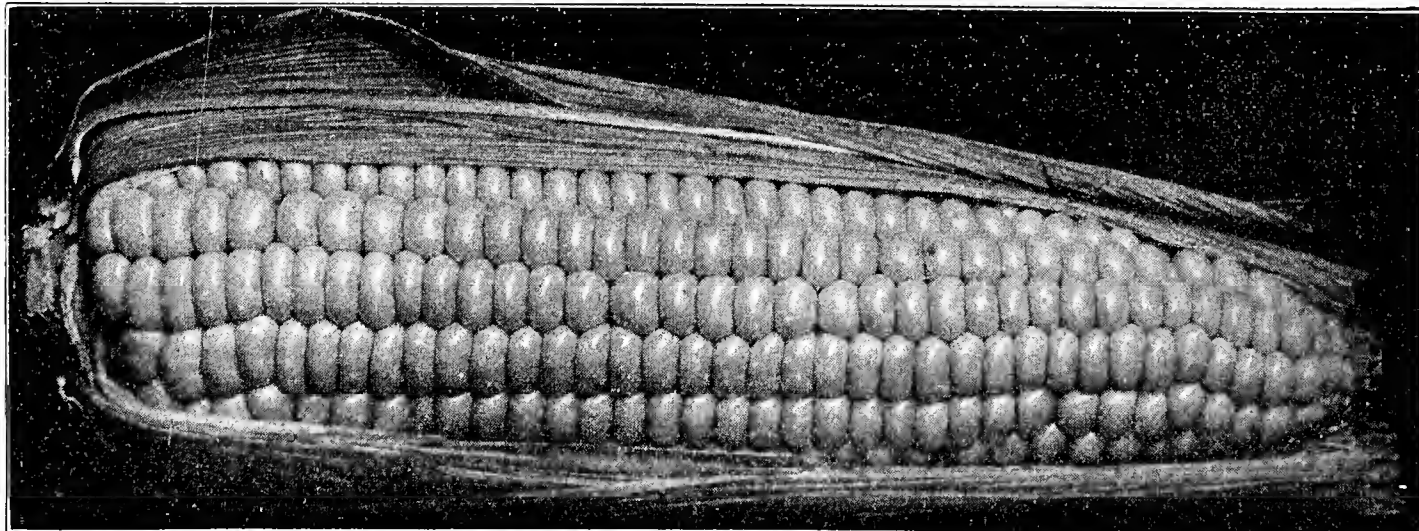
**GOLDEN BANTAM**—A new early sweet corn, considered by many people the richest and sweetest of all corns. Some of our customers who prefer this sort to all other kinds are planting it at regular intervals all during the season, so they may have a continued supply for their table. The stalks are of medium size, with heavy foliage. The ears are borne two to a stalk about six inches in length and are eight-rowed. The kernels are of golden yellow color. Pkt. 5c; lb. 20c; 2 lbs. 35c; 10 lbs. \$1.55.

**EARLY EVERGREEN**—Like Stowell's Evergreen, only ten days earlier. Ears are large, about 10 inches long, 12 to 16-rowed, and having the identical flavor of the famous Stowell's Evergreen. Pkt., 5c; lb. 20c; 2 lbs. 35c; 10 lbs. \$1.55.

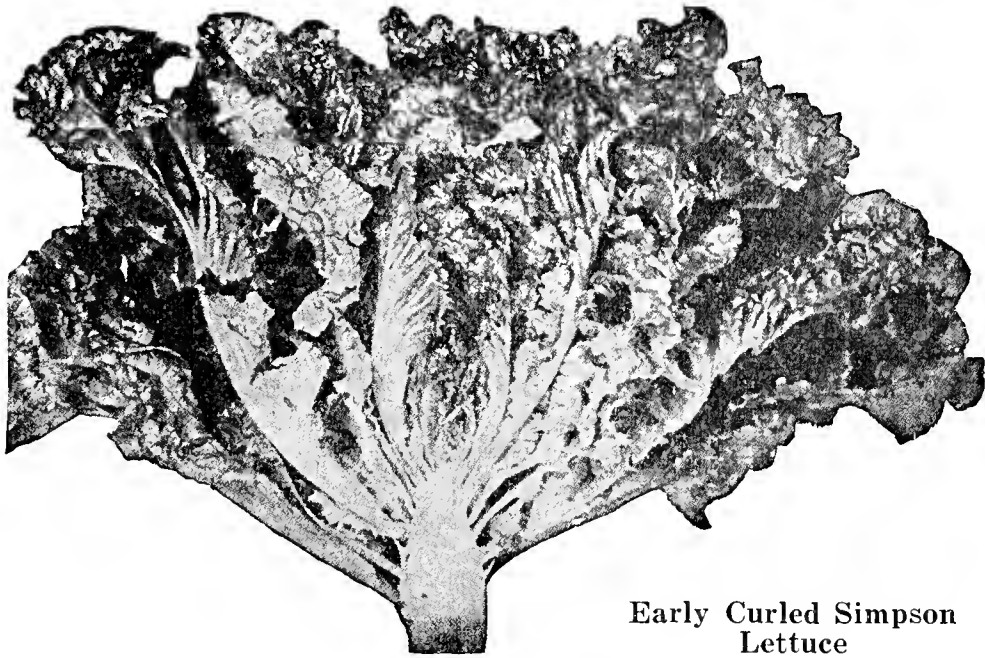
**STOWELL'S EVERGREEN**—This variety is more largely planted than any other, and is the general favorite with canners and market gardeners for late use. It is very productive, the ears are of large size, grain deep, exceptionally tender and sugary, and remain for a long time in an edible condition. Pkt. 5c; lb. 20c; 2 lbs. 35c; 10 lbs. \$1.55.

**COUNTRY GENTLEMAN**—We have a stock of this excellent sweet corn that is exceptionally good. There is no sweet corn that compares with the Country Gentleman for sweetness. It is the variety par excellent where quality is desired. Market gardeners who make a specialty of growing for hotels and high-class restaurant trade use this as a main crop variety in preference to any other. For home use it will be found superior and it is very productive. Pkt. 5c; lb. 20c; 2 lbs. 35c; 10 lbs. \$1.55.

**HOWLING MOB**—This corn is of good size, but early and at the same time has the excellent flavor of the later varieties. The stalks are strong, vigorous, about five feet in height and bear two ears. The ears are from seven to nine inches in length, of good shape and well covered by a heavy husk which protects the ear from worms. Pkt. 5c; lb. 20c; 2 lbs. 35c; 10 lbs. \$1.55.



Golden Giant



Early Curled Simpson Lettuce

**EARLY CURLED SIMPSON**—This is the most popular early sort on the market. Form large, loose heads. Leaves thin and exceedingly tender, of light green to golden yellow. Best sort for forcing or outdoor early planting. Pkt. 5c; oz. 15c; ½ lb. 70c.

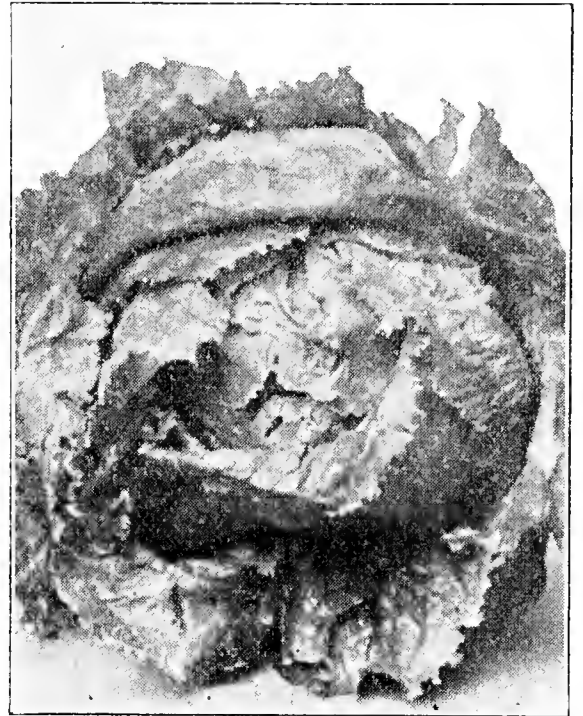
**GRAND RAPIDS**—The well-known forcing variety for the Middle West, where the butter-heads or cabbage varieties do not grow very well under glass. It is a loose branching variety, forming no definite head; is extremely curly, and its light green color is very attractive. Pkt. 5c; oz. 15c; ½ lb. 70c.

**PRIZEHEAD**—The outer leaves are bright and green, shaded with brownish red. They are large and thin, attractively curled, and very tender. Pkt. 5c; oz. 15c; ½ lb. 70c.

**IMPROVED HANSON'S**—One of the best for growing during the hot summer months, as it will stand heat and dry weather to perfection. Light green color outside and white within, tender, crisp. Pkt. 5c; oz. 15c; ½ lb. 70c.

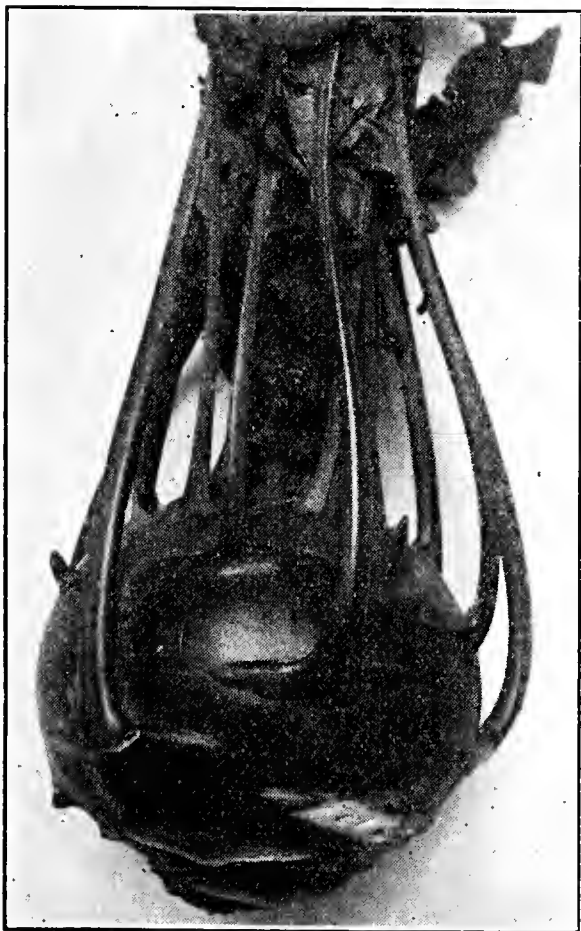
## Lettuce

**NEW YORK or WONDERFUL**—A favorite variety. Heads are very large, heavy and compact. Has a vigorous root system, which enables it to stand hot weather better than other varieties. The interior is beautifully blanched, creamy white, crisp and tender and free from any bitterness. Pkt. 10c; oz. 20c; ½ lb. \$1.10.



New York or Wonderful Lettuce

**BLACK SEEDED SIMPSON**—Very easily grown and one of the most reliable varieties. Does well both outdoors and in green house, and forms beautiful large, loose heads and is very slow to go to seed. Splendid for home garden and market. Pkt. 5c; oz. 15c; ½ lb. 70c.



White Vienna Kohl Rabi

### KOHL-RABI

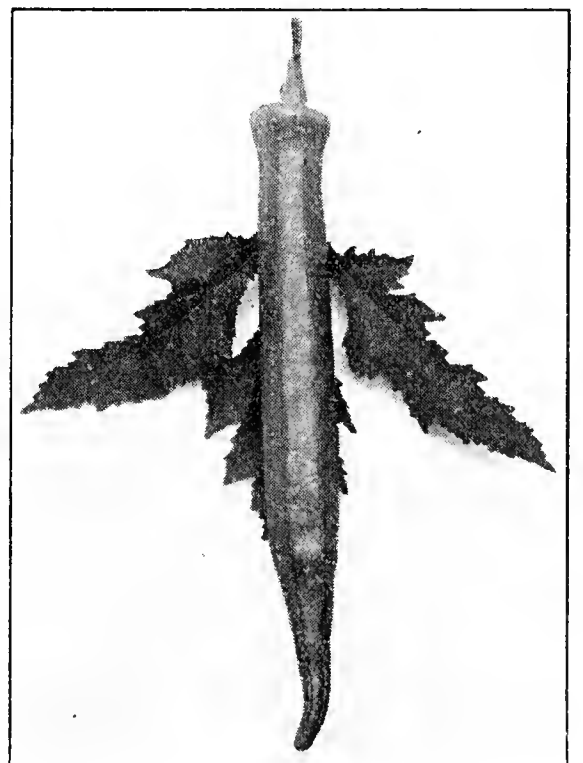
**EARLY WHITE VIENNA**—Very tender and excellent for table use. Pkt. 5c; oz. 25c.

## Okra

**WHITE VELVET**—It is very distinct in appearance and unlike other varieties the pod is not ridged but is perfectly smooth and round. They are of attractive appearance and superior flavor and tenderness. The plants are comparatively dwarf and of compact branching growth; the pods are of extra large size and produced in great abundance. Pkt. 5c; oz. 10c; ¼ lb. 20c.

**TALL OR LONG GREEN**—Grows to a height of five feet. Pods usually eight-ridged and about 6 inches long. Pkt. 5c; oz. 10c; ¼ lb. 20c.

**DWARF GREEN**—Bears pod ready for use ten days or two weeks earlier than the tall sorts. The plants are of dwarf, stocky growth and are very prolific. Pkt. 5c; oz. 10c; ¼ lb. 20c.



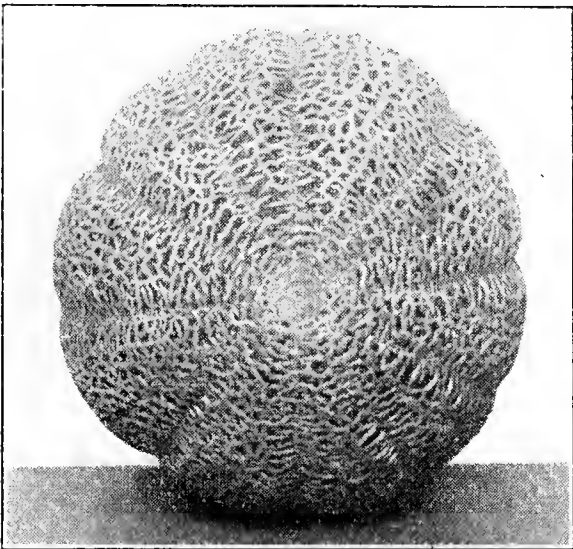
Tall or Long Green Okra

## Muskmelons and Cantaloupes

**TIP TOP**—This very productive melon is of medium to large size, nearly round, slightly ribbed and fairly well covered with shallow netting. The flesh is deep yellow in color. The universal testimony of everyone using Tip Top is that every fruit produced, whether big or little, early or late in the season, is a good one—Sweet, juicy, finest flavor, firm, but not hard-fleshed, eatable to the very coating. Pkt. 5c; oz. 15c; ½ lb. 85c.

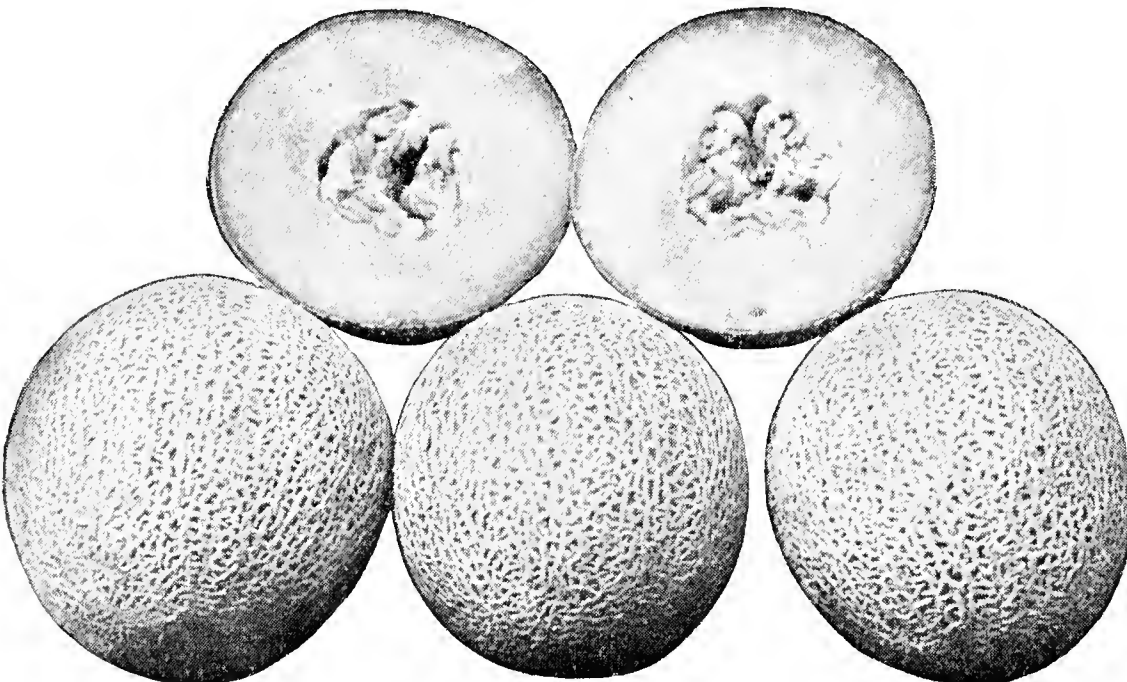
**HOODOO or HEARTS OF GOLD**—An orange fleshed melon of medium size, fine for the home garden as a mid-season sort, also ideal as a shipping melon, as the rind, although thin, is very firm and is covered with dense, fine netting. Vines are vigorous and resist blight well. Fruits are uniform, medium in size, nearly round. The flesh is thick, firm, highly colored and delicious. Pkt. 5c; oz. 15c; ½ lb. 80c.

**NETTED GEM**—Very early, delicious, small and round in shape. Firm, green flesh, sweet almost to the rind. Pkt. 5c; oz. 15c; ½ lb. 75c.

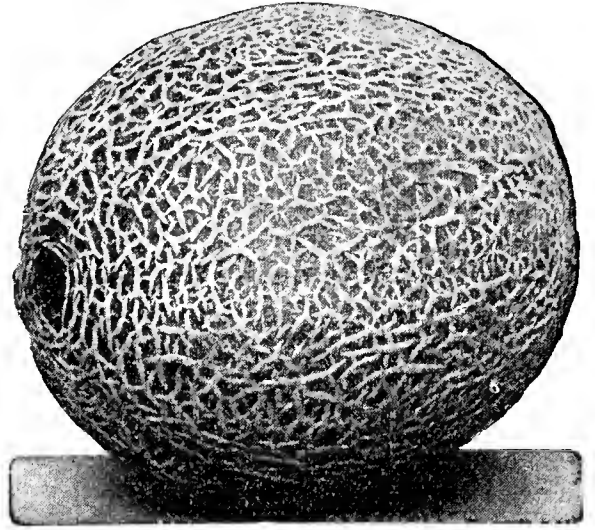


Hales Best—H. B.

**BURRELL'S SUPERFECTO**—This melon was introduced only a few years ago by Mr. Burrell at Rocky Ford and it is now considered the leading market melon in that district. The netting is well developed, flesh fine grained and very deep. Color of a reddish salmon, clear to the thin tough rind. An excellent keeper. Pkt. 5c; oz. 15c; ½ lb. 80c.



Burrell's "Superfecto" No. 1



Hoodoo or  
Hearts of Gold

**BURRELL'S GEM**—This melon was introduced after the Rocky Ford, but now rivals it in popularity. The Burrell's Gem has a salmon flesh of unusual thickness. The flavor can hardly be surpassed. The rind is heavily netted, slightly ribbed and very thin. The melons are a nice size, being about 6 inches in length. Pkt. 5c; oz. 15c; ½ lb. 75c.

**EMERALD GEM**—This is a variety of excellent quality; it is of medium size. The skin is of deep emerald green color, and ripens to the green rind. The flavor is very sweet and luscious. The vines are hardy and very prolific, and the melons mature extremely early. Pkt. 5c; oz. 15c; ½ lb. 75c.

**BANANA**—A long salmon fleshed variety of good flavor, grow about fifteen inches long. Pkt. 5c; oz. 15c; ½ lb. 85c.

**HONEY DEW MELON**—The fruits are of medium size round or slightly oval, 5 to 8 inches in diameter. Flesh light emerald green, fine grained and of very sweet sugar flavor. Pkt. 10c; oz. 15c; ½ lb. 95c.

**HALES BEST**—This is the earliest melon we list. It is a new variety which originated in the Imperial Valley of California. The Salmon colored flesh is of fine flavor, exceptionally thick, with a very small seed cavity. The melons are oval, about 8x4½ inches with a heavy netting, and is slightly ribbed. Plant Hales Best and be the first on the market. Pkt. 5c; oz. 15c; ½ lb. 80c.

**HONEY ROCK**—A new melon originating in Michigan said to be a cross between Honey Ball and Hoodoo. Almost round of the right size for a breakfast melon. Golden skin with very fine netting, flesh very sweet. Melons run very uniform in size, shape and quality. Pkt. 5c; oz. 15c; ½ lb. \$1.00.

**POLLOCK 10-25**—This melon is identical in size with the Rocky Ford; the flesh is salmon tinted instead of all green. It is rapidly taking the place of the old green flesh Rocky Ford. Pkt. 5c; oz. 15c; ½ lb. 60c.

**ROCKY FORD**—This is the melon that made Rocky Ford famous. The flesh is green, very deep, solid and sweet, and can be eaten close to the rind. The seed cavity is very small. Pkt. 5c; oz. 15c; ½ lb. 60c.

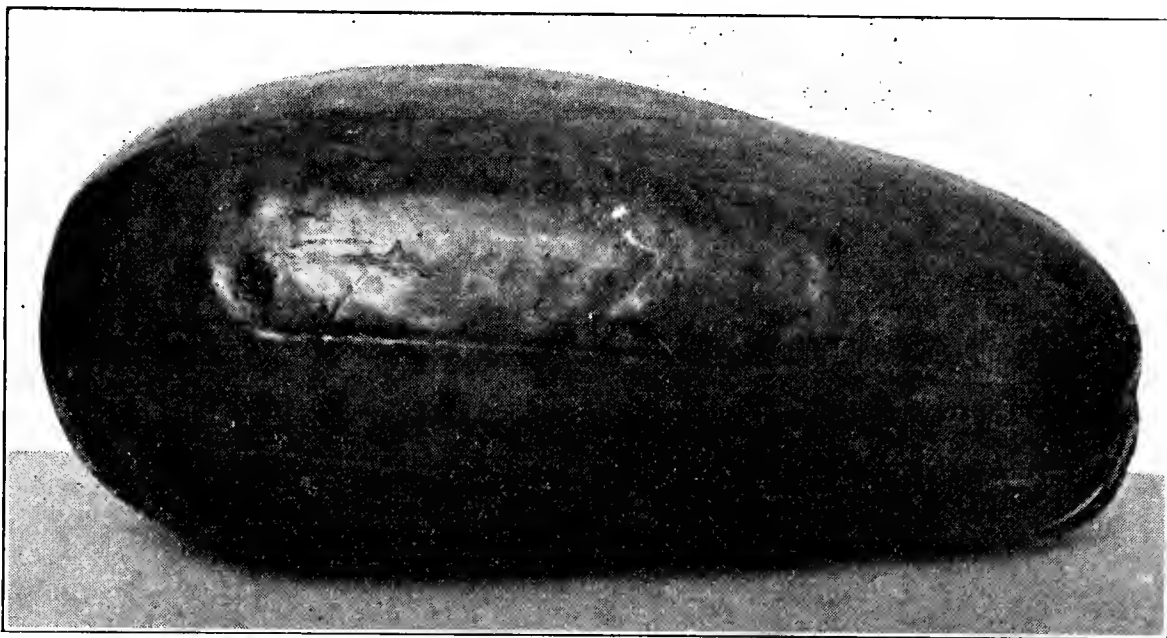
**HACKENSACK**—A very large, green fleshed melon. The vines are hardy, vigorous and productive. The fruits are nearly round, usually somewhat flattened; ribs large and of irregular width, densely covered with coarse netting. Pkt. 5c; oz. 15c; ½ lb. 75c.

## Watermelons

Our watermelon seed is grown especially for us in the South and selected from the very best melons.

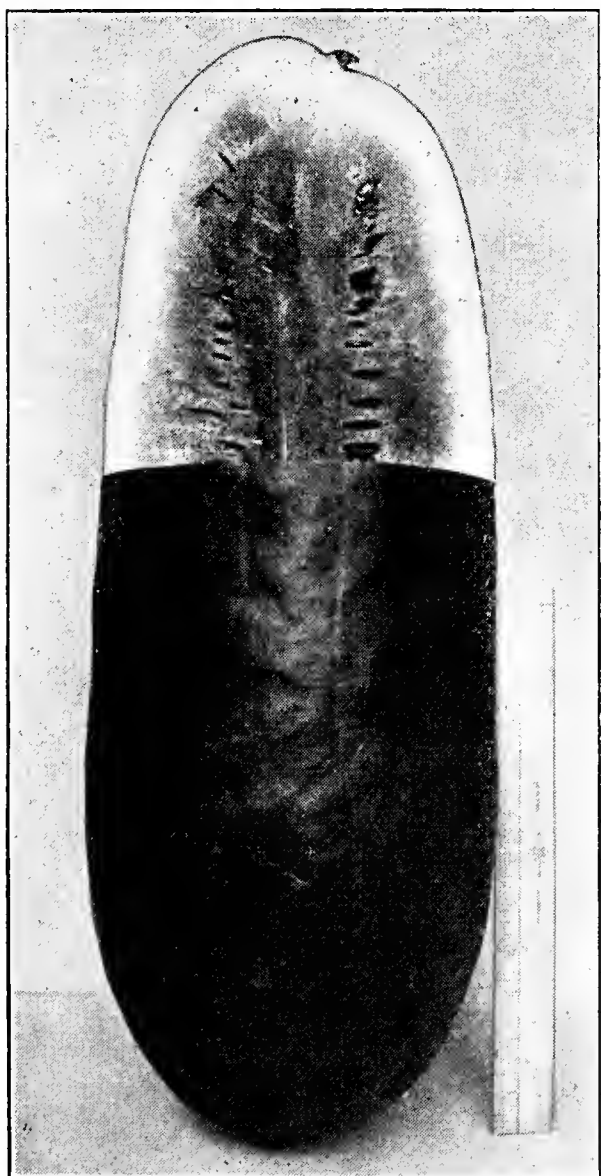
**WONDERMELON or WHITE SEEDED KLECKLEY SWEET**—A carefully bred and selected strain of early melon is far superior to the old Kleckley Sweet. This improved variety grows uniform large, retains all the fine qualities as a table and market melon. Early and a good yielder. Pkt. 5c; lb. 75c; 5 lbs. \$3.50.

**IRISH GREY**—This melon, as the name indicates, is of a greenish gray color, with a remarkably tough rind. It is one of the very best shippers ever introduced, and at the same time is of delicious flavor, free from hard centers and strings, very firm and does not break when sliced. It ripens in about 90 days, and stays in good condition for a long period. The Irish Grey has a decided advantage over dark-skinned melons in that it does not sunburn, even when lying in the sun several days after becoming ripe. Its many excellent qualities make it a splendid melon. Pkt. 5c; lb. 75c; 5 lbs. \$3.50.



Pride of Muscatine

**PRIDE OF MUSCATINE**—This is a new Wilt-resistant strain of the Kleckley Sweet developed by the Iowa State Department of Agriculture in cooperation with the Iowa Melon Growers Association. It is a vigorous grower, matures early, and produces long dark green melons with a rich firm, crisp, sweet flesh of a dark red color. A valuable melon on wilt infested soil. Pkt. 5c; oz. 15c; lb. \$2.00.



Cut-Red Watson

**STONE MOUNTAIN**—A new round watermelon showing slight ribs or lobes like a cantaloupe. The color of the smooth skin is light green. The flesh is a uniform beautiful deep crimson without any white hearts or stringiness. The average fruit weighs about 45 lbs. The rind is too tender to permit long distance shipping, but for the garden or local markets it has no equal. It is very prolific and exceptionally sweet. Pkt. 5c; lb. 75c; 5 lbs. \$3.50.

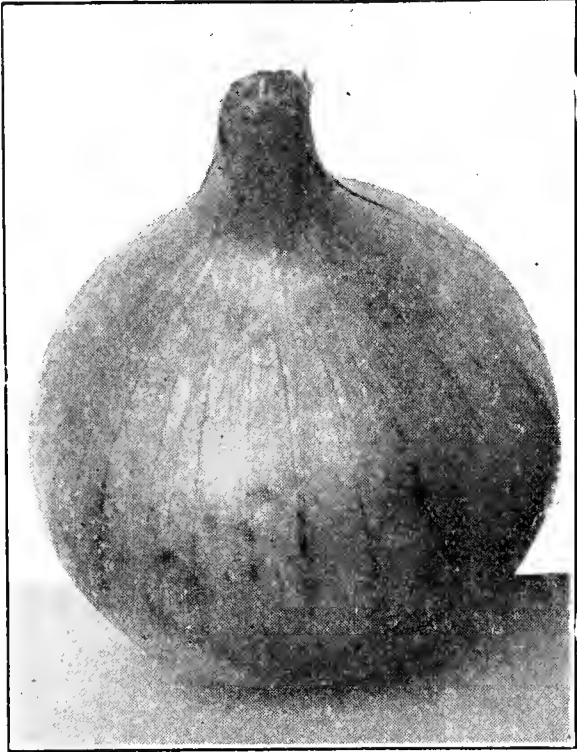


Irish Grey

**IMPROVED HALBERT HONEY**—A Texas melon which closely resembles Kleckley's Sweet, but darker color and more even and regular in shape. Cannot be shipped a great distance, as the rind is very brittle, but it is unsurpassed for home market and family use. It grows from 15 to 30 inches long, is dark green, slightly ribbed, and blunt at the blossom end. Pkt. 5c; lb. 75c; 5 lbs. \$3.50.

**IMPROVED EXCEL**—Produces melons 18 to 22 inches long by 12 to 16 inches in diameter and weighing 40 to 50 pounds. Rind is tough, dark green and indistinctly striped. The deep red flesh is crisp, melting and of finest flavor. Heart large, very fine and free from core or hard centers. Pkt. 5c; lb. 75c; 5 lbs. \$3.50.

**CUT-RED WATSON**—No other watermelon has become as popular as the Tom Watson and 65 per cent of the commercial melons now being grown are of that variety. Yet it is a well known fact that for the past several years Watson has been cutting with hard centers and almost worthless for market. Our melon seed grower advises us that after years of rigid selection and careful breeding he has produced the Cut-Red Watson and has entirely eliminated the hard white centers. This perfected strain of Watsons cuts red and sweet and grows big dark glossy green melons frequently weighing 50 to 60 pounds. Pkt. 5c; lb. 75c; 5 lbs. \$3.50.



Prizetaker

## Onion Seeds

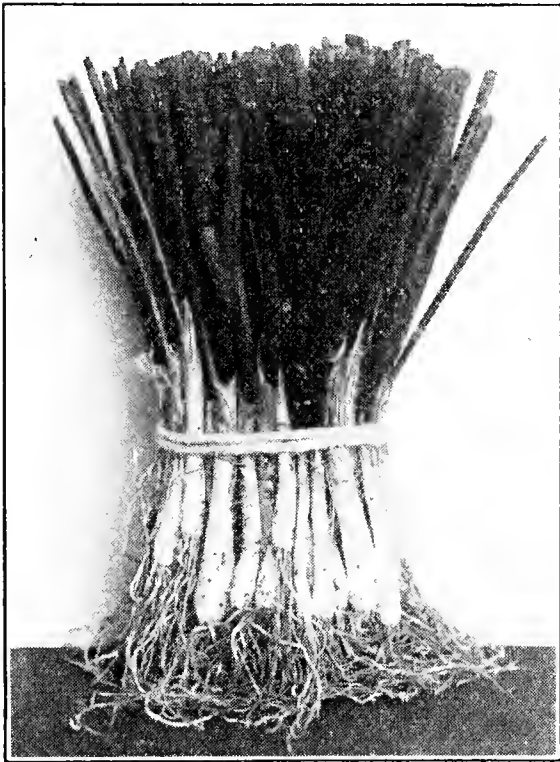
**LARGE RED WETHERSFIELD**—The old standard sort; best for main crop. Large, deep red, thick, nearly round, fine grained, of pleasant flavor and a good yielder. It ripens in September and keeps well. Pkt. 5c; oz. 20c;  $\frac{1}{4}$  lb. 60c.

**WHITE SILVERSKIN**—An early ripening, good sized sort of clear, silvery-skinned bulbs of beautiful appearance early in the summer. Largely used for small pickles, as it is of fine mild flavor. Pkt. 5c; oz. 20c;  $\frac{1}{4}$  lb. 75c.

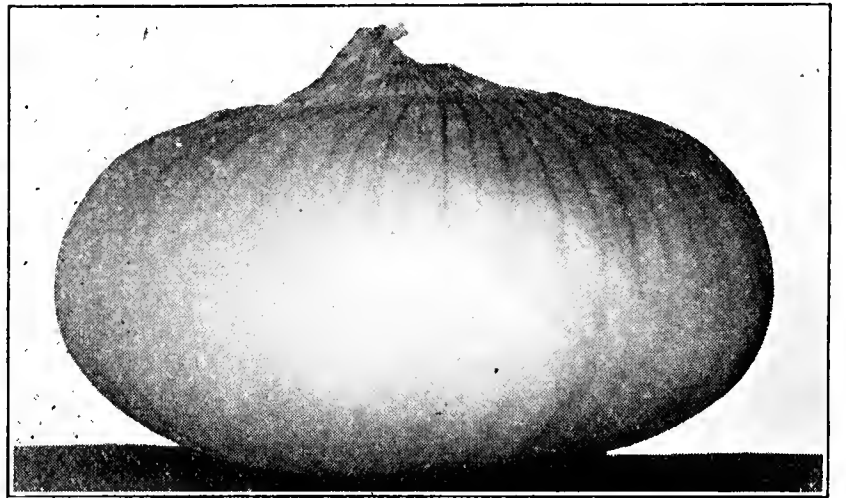
**DANVERS YELLOW GLOBE**—Handsome, nearly globeshaped bulbs of pale yellow color; crisp, pure white flesh of mild flavor. Pkt. 5c; oz. 20c;  $\frac{1}{4}$  lb. 65c.

**PRIZETAKER**—Grows to an immense size and for fall marketing unexcelled. Although of such great size, it is very hardy and a fair winter keeper, as it ripens up hard and firm; very fine grained, and of mild, delicate flavor. The outside skin is rich yellow while the flesh is white. Pkt. 5c; oz. 20c;  $\frac{1}{4}$  lb. 65c.

**SOUTHPORT RED GLOBE**—This handsome and most red-colored of all red sorts is becoming more popular every season. It is of a rich, glossy dark red, and makes a very attractive appearance. The bulbs are remarkably uniform in size and are splendid keepers. Pkt. 5c; oz. 20c;  $\frac{1}{4}$  lb. 75c.



White Bermuda Plants



Crystal White Wax Onion

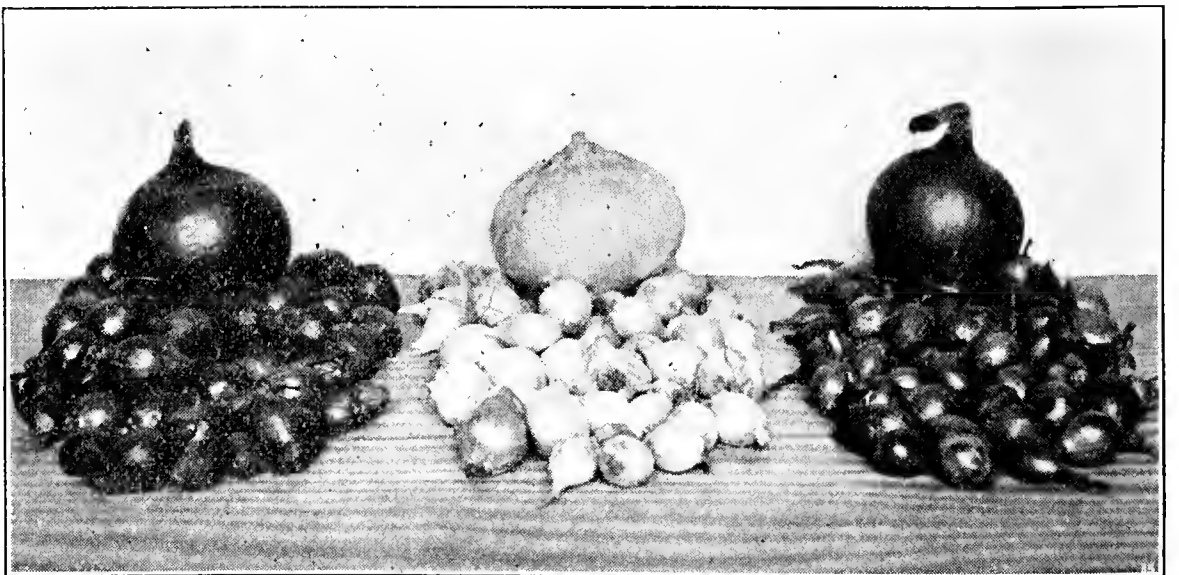
**CRYSTAL WHITE WAX**—Also known as White Bermuda. Grown extensively for northern markets by growers in Texas for both plants and mature onions. Its mild, sweet flavor is an outstanding feature. Pkt. 5c; oz. 40c;  $\frac{1}{4}$  lb. \$1.25.

## Onion Sets

Our onion sets are western grown and are dry and unsprouted. A pound of onion sets are equal to about a quart. Ask for prices in quantities. Red Sets—10c lb. Yellow Sets—10c lb. White Sets—15c lb.; 2 lbs. 25c.

## Bermuda Onion Plants

Ask for prices on our genuine Yellow Bermuda and Crystal White Wax Bermuda Onion Plants, also Frost Proof Cabbage plants. Special wholesale prices in quantities. Make up a club order among your neighbors and save money on plants.



# Garden Peas---Select Northern Stock

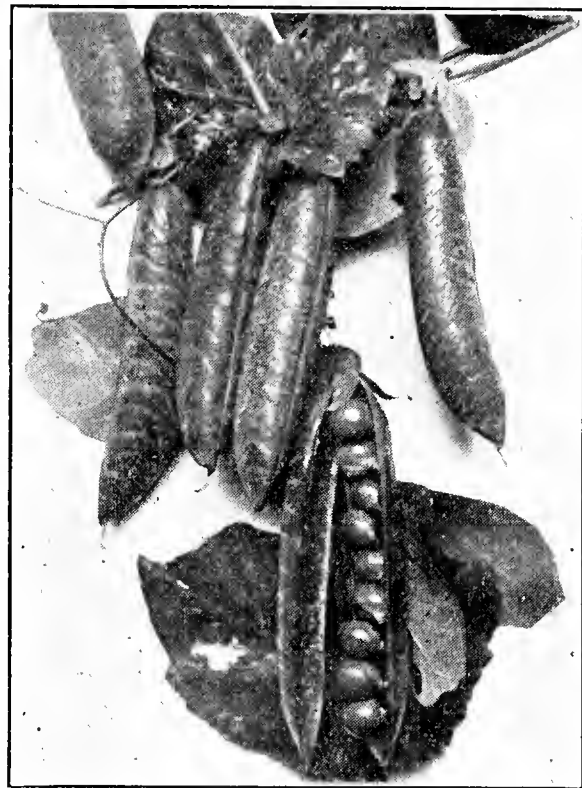
## EARLY VARIETIES

**AMERICAN WONDER**—The plants grow only 12 inches high and produce an abundance of medium-size pods, which are filled with large sweet peas of luscious quality. The earliest wrinkled sort. Pkt. 5c; lb. 25c; 10 lbs. \$2.00.

**ALASKA**—The earliest smooth pea in existence. The pods are medium in size, well filled and mature practically all at one time. Our strain is extra selected. Pkt. 5c; lb. 25c; 10 lbs. \$2.00.

**PREMIUM GEM**—An improvement on the little Gem, being large and more productive. Early in maturing, very luscious in flavor and highly recommended. Try it. Pkt. 5c; lb. 25c; 10 lbs. \$2.00.

**NOTT'S EXCELSIOR**—Of compact growth with many handsome, good-sized pods, which are closely packed with large peas of unusually sweet flavor. Matures almost as early as the American Wonder and the pods are large. Height 14 to 16 inches. Pkt. 5c; lb. 25c; 10 lbs. \$2.00.



American Wonder

## MAIN CROP VARIETIES

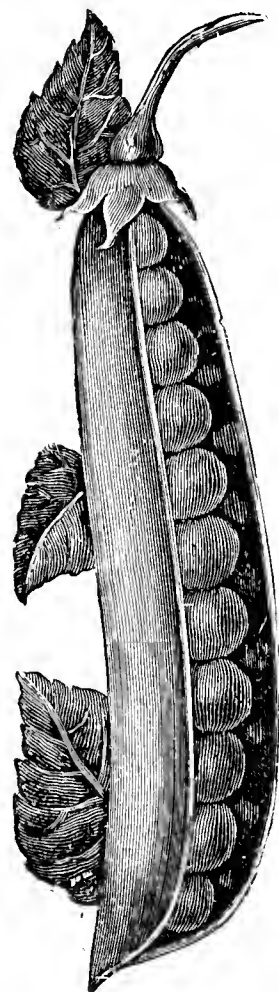
**BLISS EVERBEARING**—Vigorous and branching in habit of growth. Height 2½ to 3 feet. Pods 2¾ to 3 inches long. Broad, light colored and blunt. Fit to pack 70 days from planting. Seed green, wrinkled, large in size. Pkt. 5c; lb. 25c; 10 lbs. \$2.00.

**LEONARD'S POTLATCH**—Strong, vigorous vines of even growth, 20 to 24 inches in height, with luxuriant dark foliage, bearing pods medium green in color, 3½ to 4 inches in length, broad and pointed at the ends. No variety known will produce more pods, and no pods could possibly shell out better. The Potlatch is a variety from which anyone may expect great things. Fit for table use 61 days from planting. Seed green, wrinkled, large size. Pkt. 5c; lb. 25c; 10 lbs. \$2.25.

**TELEPHONE**—This variety is one of the finest branching, tall, wrinkled marrows yet introduced. It bears splendid peas of the finest quality and excellent, sugary flavor; vine very strong, averaging 18 to 20 pods per plant; the pods are of a large size and closely packed with from 8 to 10 large delicious peas. Pkt. 5c; lb. 25c; 10 lbs. \$2.00.

**CHAMPION OF ENGLAND**—For main crop or summer use, this is the standard variety. Very prolific. Grows 3 to 5 feet. Pkt. 5c; lb. 25c; 10 lbs. \$2.00.

**DWARF TELEPHONE**—This variety is the result of a cross between Stratagem and Telephone. The season is medium, ripens about a week earlier than Stratagem. Pods 4 inches long, broad, straight, rounded at the point, dark green in color and well filled. Pods often contain ten peas. Seed pale green, much wrinkled and shriveled. Straw about 20 inches long. Pkt. 5c; lb. 25c; 10 lbs. \$2.25.



Dwarf Telephone



Leonard's Potlatch

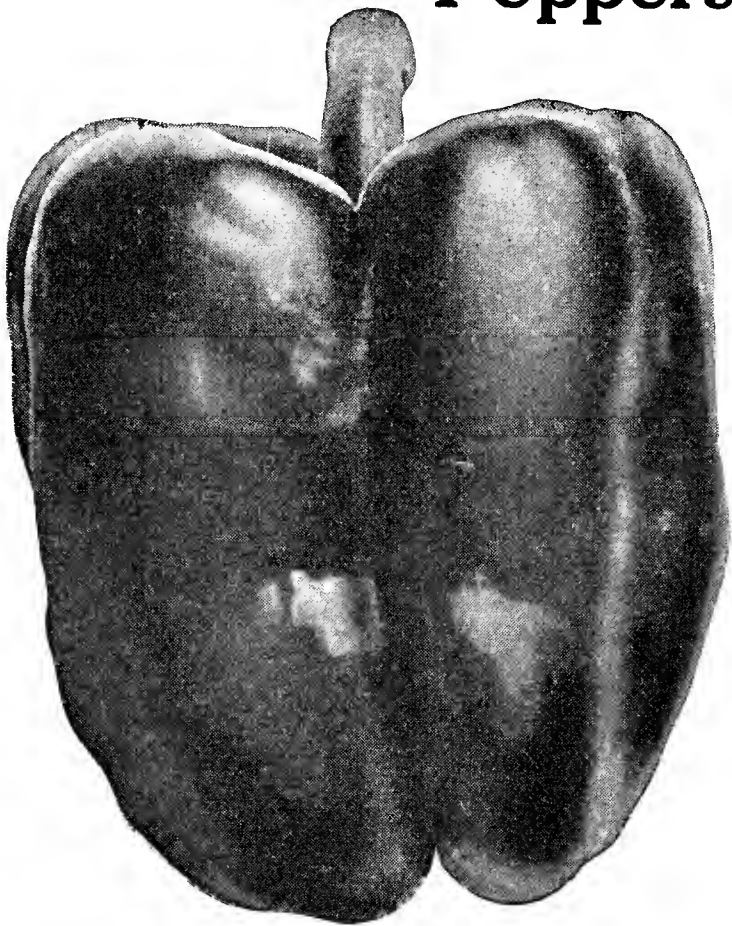
## Parsley

**MOSS CURLED**—The green leaves are finely cut and curled, and of dark green color. Extra fine for garnishing and culinary purposes. Pkt. 5c; oz. 10c.

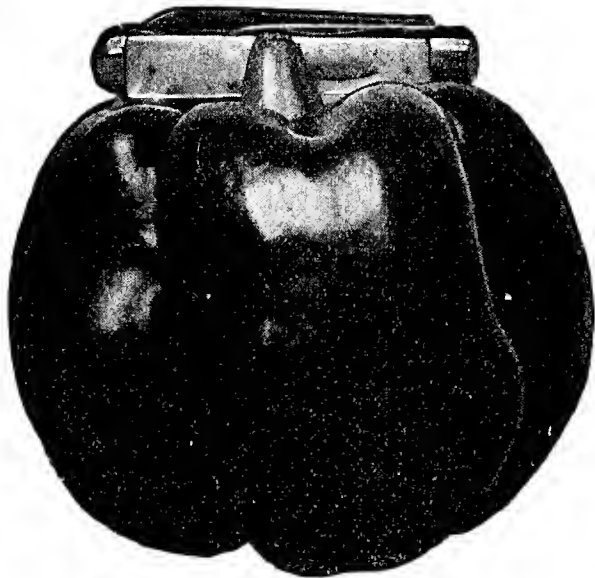
## Parsnips

**IMPROVED HOLLOW BROWN**—The best for table use; a vegetable of merit, easily raised and of great productiveness. Pkt. 5c; oz. 15c.

## Peppers



Chinese Giant Pepper



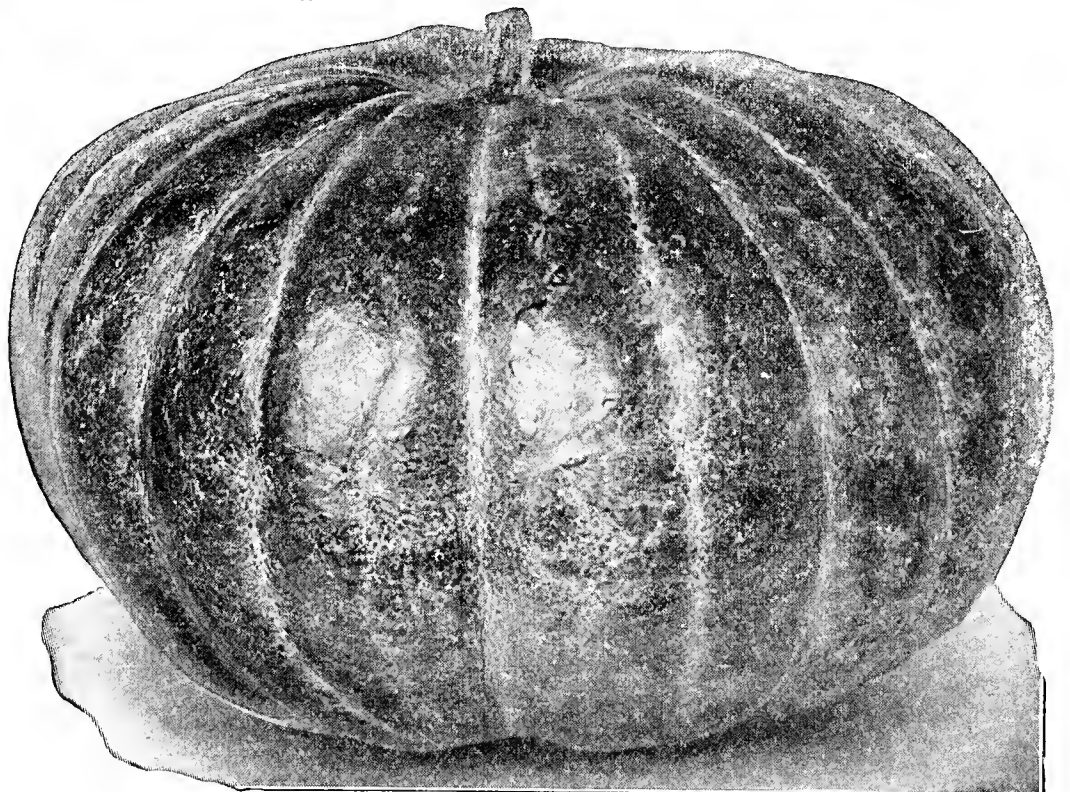
Ruby King Pepper

## Pumpkins

**SMALL SUGAR or PIE**—Smaller than the field pumpkin, but finer grained, sweeter and very prolific; first rate for the table or stock. The best variety for making pies. Pkt. 5c; oz. 10c; ½ lb. 55c.

**KENTUCKY FIELD OR LARGE CHEESE**—A large variety, producing pumpkins in abundance. Has thick meat of fine quality. Very suitable for canner's use. Pkt. 5c; oz. 10c; ½ lb. 40c.

**CASHAW**—A crook-neck variety, with green and white striped skin. The flesh is of a rich yellow color, solid, fine-grained, very thick and sweet. Pkt. 5c; oz. 15c; ½ lb. 75c.



Kentucky Field Pumpkin

**NEW CALIFORNIA WONDER SWEET PEPPER**—This new variety is recognized as being the most valuable addition to the pepper list since that useful vegetable came into general use. Fruit dark green, smooth in surface, square in cross sections and very large, usually four inches across and four and a half to five inches in length. Pkt. 5c; oz. 50c; ¼ lb. \$1.85.

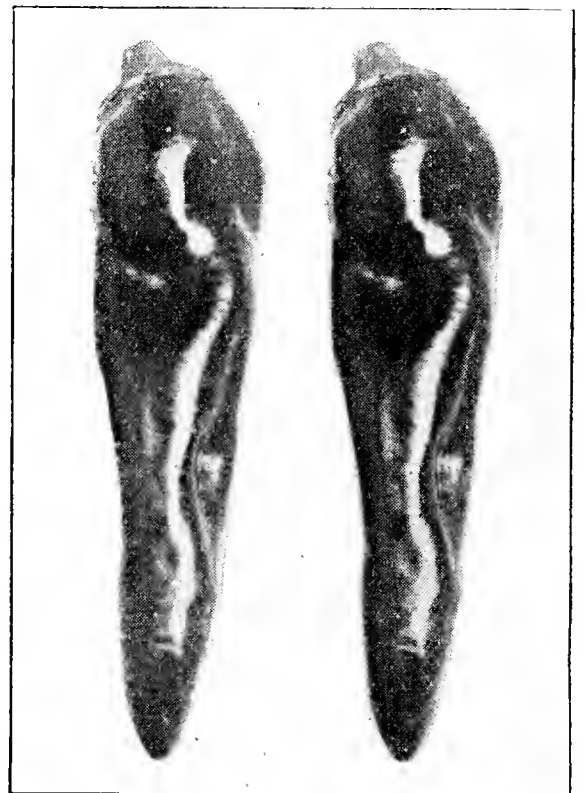
**RUBY KING**—A very prolific popular sort bearing splendid crops of splendid large, thick peppers of good quality for mangoes. Pkt. 5c; oz. 45c; ¼ lb. \$1.35.

**CHINESE GIANT**—One of the very best and largest mango peppers ever introduced. Its mammoth size, splendid shape and mild flavor, leads us to recommend it very highly. Pkt. 5c; oz. 45c; ¼ lb. \$1.70.

**PIMENTO**—This pepper is very mild with thick heavy flesh and has a delicate flavor. The shape is very good, being of medium length and smooth. very prolific. Pkt. 5c; oz. 45c; ¼ lb. \$1.25.

**WORLD BEATER**—One of the very best of the large peppers, being a cross between Chinese Giant and Ruby King, flesh very thick and mild, exceedingly productive and a good shipper. Pkt. 5c; oz. 45c; ¼ lb. \$1.70.

**LONG RED CAYENNE**—This fruit is a brilliant coral red, conical, and from 2 to 3 inches long and from ¾ to 1 inch thick. Very pungent. Pkt. 5c; oz. 45c.



Long Red Cayenne Pepper

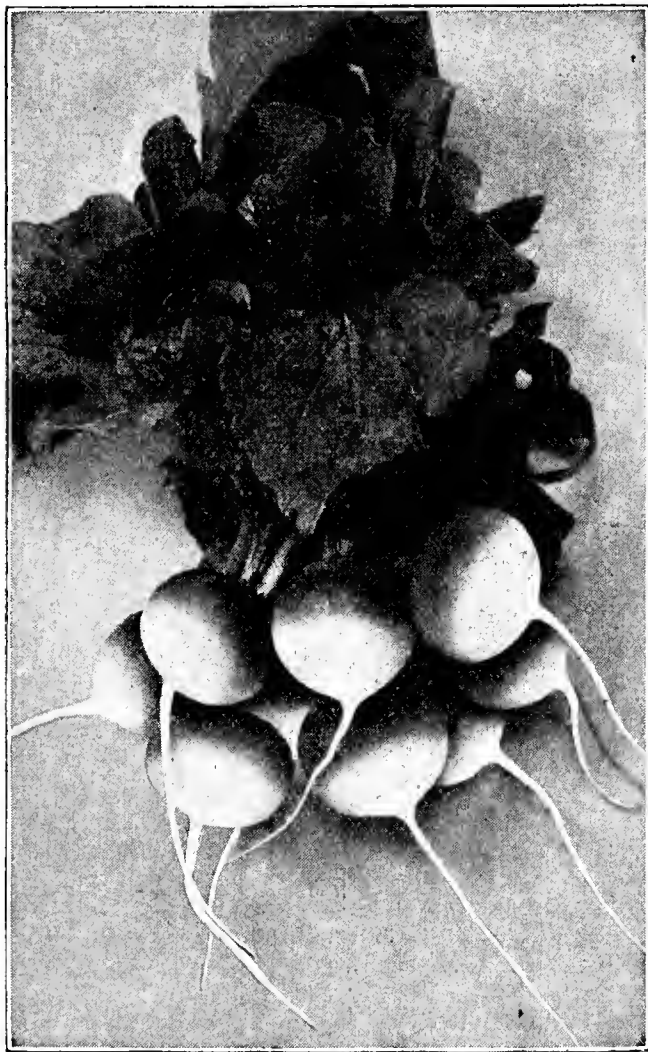


## Radishes



Early Scarlet Globe

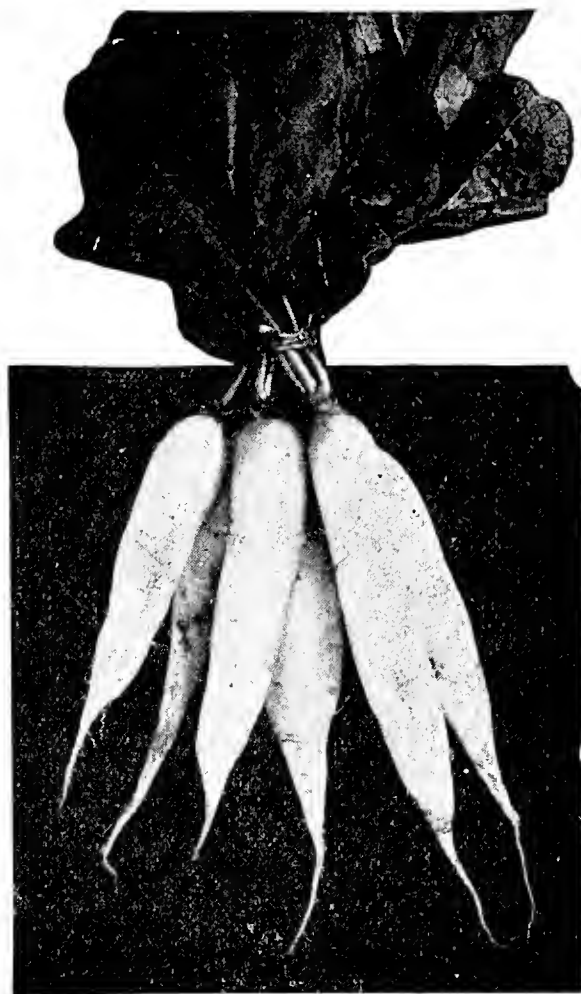
**SPARKLER WHITE TIPPED**—A new and distinct globe-shaped radish. The roots, even when fully developed, are solid, crisp and sweet. The colors are more vivid and attractive. The upper part is a rich carmine scarlet, with a large tip of the purest white, Pkt. 5c; oz. 10c; ½ lb. 40c.



Sparkler White Tipped

**EARLY SCARLET GLOBE**—This is a splendid variety for either outdoor or greenhouse culture. It is generally considered the best of the round scarlet forcing variety. The radishes mature quickly, producing small top growth and are solid and crisp. Very uniform in shape. The color is a handsome bright scarlet. Pkt. 5c; oz. 10c; ½ lb. 45c.

**FRENCH BREAKFAST**—A beautiful olive-shaped sort of bright scarlet color, with well-defined white tip; a rapid grower; very mild and tender. Pkt. 5c; oz. 10c; ½ lb. 40c.



Icicle Radish

**CRIMSON GIANT GLOBE**—An entirely new variety and differs radically from all others, inasmuch as the roots attain more than double the size of the other forcing varieties without getting pithy or hollow. It is very early, notwithstanding its size. Color, crimson; meat pure white and of the best quality. Pkt. 5c; oz. 10c; ½ lb. 45c.

**LONG SCARLET SHORT TOP**—Is undoubtedly the best standard variety for private garden and market use. Color, bright scarlet. Pkt. 5c; oz. 10c; ½ lb. 40c.

**CHARTIERS**—Long scarlet tipped with white. Pkt. 5c; oz. 10c; ½ lb. 45c.

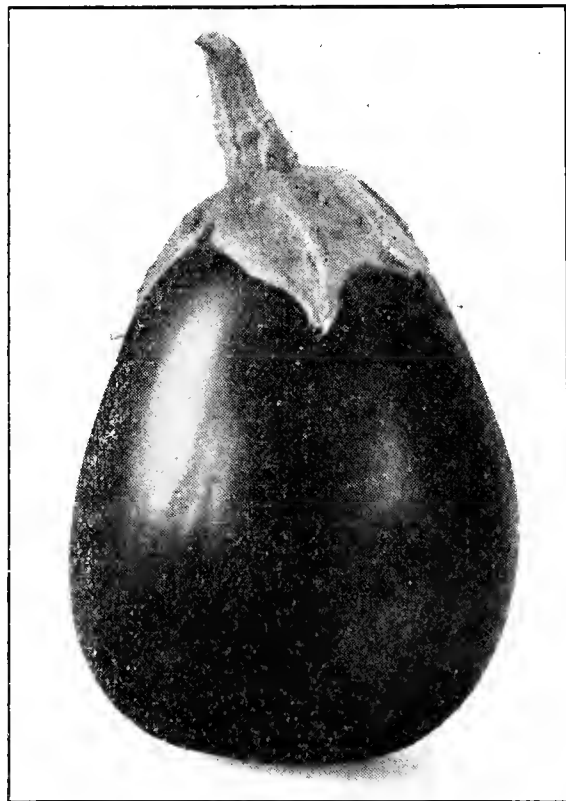
**ICICLE**—The finest eating white radish; has long, slender, pure white roots. Pkt. 5c; oz. 10c; ½ lb. 40c.

**WHITE VIENNA or LADY FINGER**—An excellent variety of the summer radishes; long, pure white and of mild flavor. Pkt. 5c; oz. 10c; ½ lb. 45c.

**WHITE STRASBURG**—Large showy half long, white sort. The best summer variety. Pkt. 5c; oz. 10c; ½ lb. 45c.

**CHINA ROSE (Winter)**—Of bright deep rose color; flesh firm and excellent for keeping. Pkt. 5c; oz. 15c; ½ lb. 60c.

**WHITE CHINESE (Winter)**—A comparatively new variety which is popular wherever known. The root is long, cylindrical, with beautiful white skin. Pkt. 5c; oz. 15c; ½ lb. 60c.



Black Beauty Egg Plant

## Egg Plant

**NEW YORK IMPROVED PURPLE**—One of the best and largest varieties in cultivation. Pkt. 10c; oz. 50c.

**BLACK BEAUTY**—Ten days or two weeks earlier than the preceding, with fruit just as large... Pkt. 10c; oz. 50c.

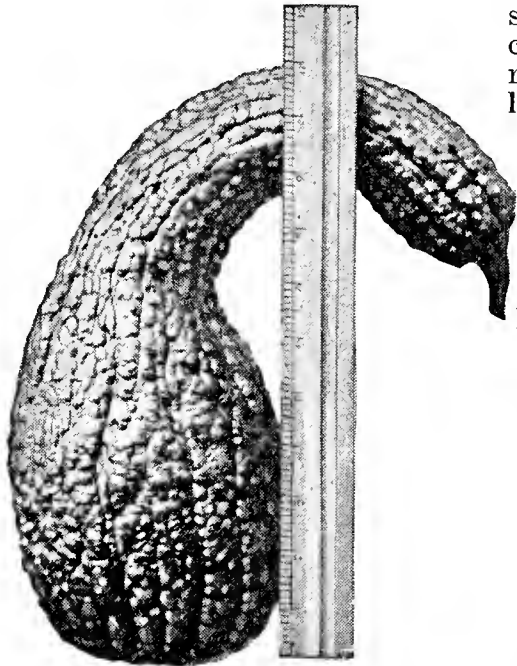
## Squash

**EARLY WHITE BUSH**—This is the well-known White Patty-pan Squash. The earliest to mature, very productive; light cream colored. Pkt. 5c; oz. 10c; ½ lb. 75c.

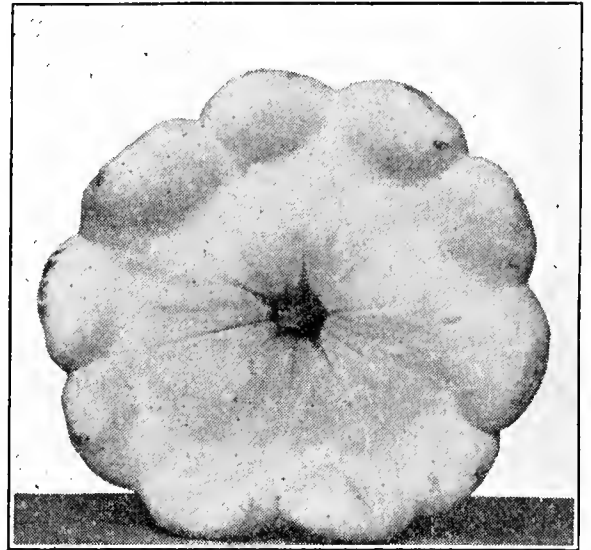
**SUMMER CROOKNECK**—The plants are very productive and early bearing; skin of fruits very thickly warted and of orange-yellow color. Pkt. 5c; oz. 10c; ½ lb. 75c.

**WARTED HUBBARD**—The most popular table variety. Fruits are of oblong shape, with attractive olive skin which is warted. Pkt. 5c; oz. 15c; ½ lb. 90c.

**SIBLEY or PIKES PEAK**—One of the best winter squashes. Flesh is solid and thick of bright orange color and choice quality. Flavor is rich and sweet. Pkt. 5c; oz. 15c; lb. 90c.



Summer Crookneck



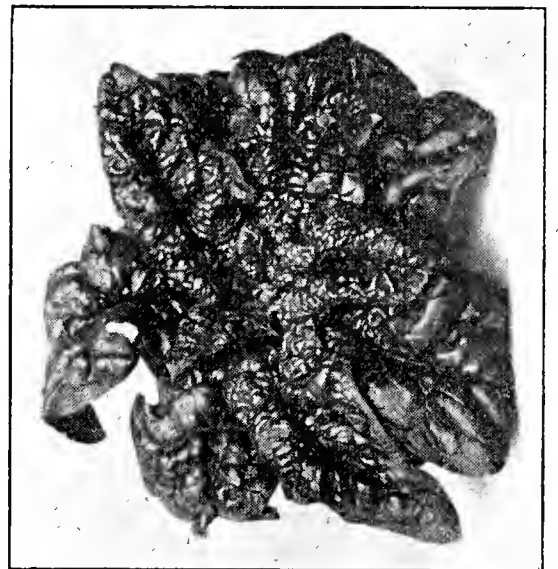
Early White Bush.

## Spinach

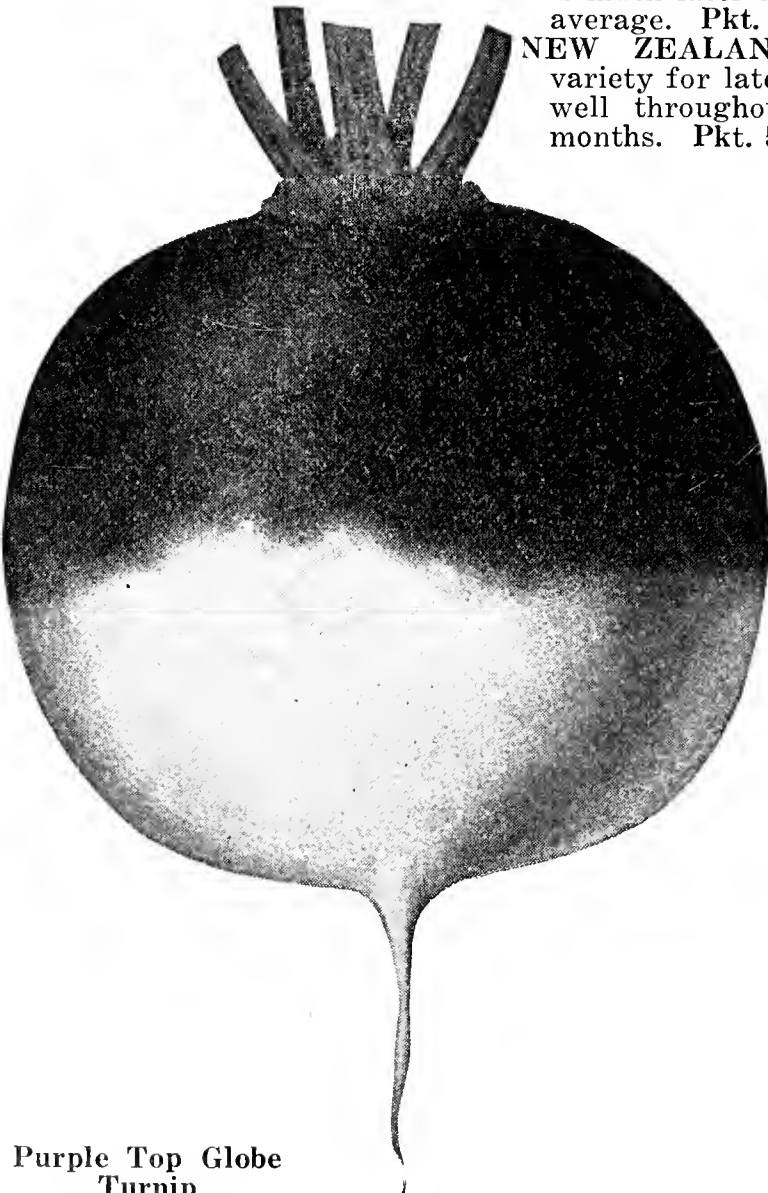
**BLOOMSDALE SAVOY LEAVED**—A most valuable variety. In appearance the leaf is wrinkled in the same way as that of the Savoy Cabbage, hence the name. Produces nearly twice the bulk of crop as the ordinary sort, is fully as hardy and in all other respects equal. Pkt. 5c; oz. 10c; 1 lb. 35c.

**LONG STANDING**—An improved strain of excellent merit, having all the good qualities of the ordinary sorts; but it is especially desirable because of the fact that it is much later in going to seed than average. Pkt. 5c; oz. 10c; 1 lb. 35c.

**NEW ZEALAND**—An extra good variety for late planting, as it does well throughout the hot summer months. Pkt. 5c; oz. 15c; lb. 90c.



Savoy Spinach



Purple Top Globe Turnip

## Turnips

**PURPLE TOP STRAP LEAF**—The standard for this part of the country. Superior for early or late planting. Round, flat, good sized, small top with but few leaves; flesh very fine; flavor good. Pkt. 5c; oz. 10c; lb. 60c.

**PURPLE TOP WHITE GLOBE**—An early variety. Globe shaped; heavy cropper. A handsome looking bulb. And is rapidly taking the lead of all other varieties of early turnips for market garden purpose. Pkt. 5c; oz. 10c; lb. 60c.

**EARLY WHITE MILAN**—The earliest of all. On account of its beautiful shape and extreme earliness this takes the front place among turnips. It is so smooth and neat in appearance that it gives the impression that it has been polished by hand. The foliage is scant and short. Both skin and flesh are snowy white. Pkt. 5c; oz. 10c; lb. 85c.

**IMPROVED PURPLE TOP RUTABAGA**—The best variety of Swedish turnip in cultivation. Hardy and productive, flesh yellow, of solid texture, sweet and well flavored; shape slightly oblong; terminates abruptly with no side or bottom roots; color deep purple above and bright yellow under the ground; leaves small, light green, with little or not neck; the most perfect in form, the richest in flavor and the best in every respect. Pkt. 5c; oz. 15c; lb. \$1.00.

# Tomatoes

## SELECTED SEED FOR THE MARKET GARDENER

**GREATER BALTIMORE**—Blight resistant. On account of its size, shape, color and enormous yield the Greater Baltimore has become immensely popular with the canners. When a canner puts his "O. K." on any variety you can be assured that it is a good one. The Greater Baltimore is rugged enough to make a good crop under very adverse weather and soil conditions. It yields heavily and is a most dependable variety. Pkt. 5c; oz. 20c; ¼ lb. 75c; 1 lb. \$2.50.

**DWARF STONE**—The most popular dwarf variety in cultivation. The stocky, sturdy plants are of upright growth, requiring no support. Pkt. 5c; oz. 45c; ¼ lb \$1.45.

**NEW STONE**—Immensely popular with canners, southern shippers, and market gardeners. It is a remarkable yielder, very firm, and of a handsome, bright red color. It is of excellent shape with very smooth skin, never cracking, and free from green core. Pkt. 5c; oz. 20c; ¼ lb. 75c; 1 lb. \$2.50.

**PONDEROSA**—Without question the largest of all tomatoes, many of which will weigh from 1½ to 2 pounds. The immense fruits are meaty, solid, and unsurpassed for slicing. The seed cavities are small, which makes the fruits very solid. The vines are very strong growers and bear the tomatoes in large clusters. The fruits are of deep purple color and oblong in form. Pkt. 5c; oz. 50c; ¼ lb. \$1.55.

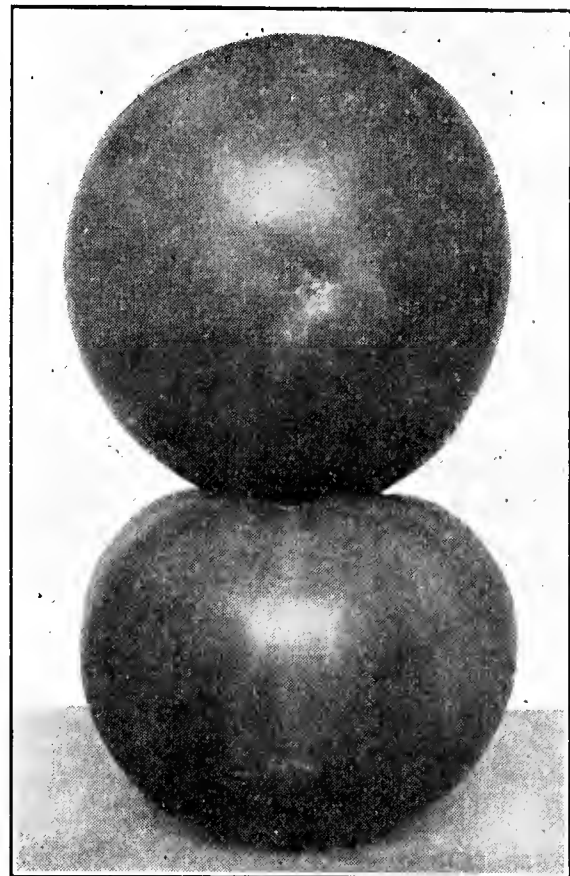
**RED HEAD**—This exceptionally fine, large, bright red variety is as early as the Chalk's Early Jewel, nearly as large as New Stone and very productive. Fruit almost globe shaped, very solid. An excellent variety for the market gardener. Pkt. 5c; oz. 30c; ¼ lb. \$1.10.

**GOLDEN PONDEROSA**—Fruit large and smooth; color a beautiful golden yellow, sometimes with a slight blush of red, as smooth and well shaped as the best of the red varieties and of superior flavor. Pkt. 5c; oz. 50c.

**CRINE'S JUNE PINK**—Undoubtedly the best pink-fruited early tomato in cultivation. The splendid round, solid, meaty tomatoes are the attraction of the markets. The plants are every thrifty, making a very vigorous growth. The fruits are usually set in large clusters, and run from 2½ to 3½ inches in diameter. Pkt. 5c; oz. 40c; ¼ lb. \$1.25.

**LIVINGSTON'S GLOBE**—It is of beautiful globe shape, with quite a percentage of elongated (stem to blossom) fruits, which permits a greater number of slices being taken than with flat fruited sorts. Color a beautiful glossy rose, tinged purple. Pkt. 5c; oz. 40c; ¼ lb. \$1.40.

**LIVINGSTON'S BEAUTY**—Large and glossy crimson fruits, smooth, and never cracking; holds its size until late in the season; one of the best. Pkt. 5c; oz. 45c; ¼ lb. \$1.40.

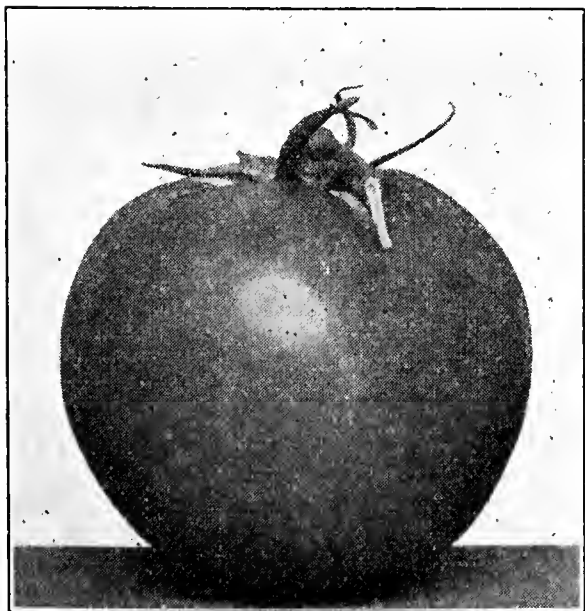


**Break O'Day**

**BREAK O'DAY**—Here is a wonderful new tomato recently developed by the U. S. Department of Agriculture. It is a cross between Marglobe and Marvava. It is a disease resistant, globe shaped tomato as early as Earliana and nearly as large as Marglobe. Color bright red. Authorities agree that "Break O'Day" is destined to become the most popular early tomato for the home and market gardener. Our seed is produced from the original 1929 Pritchard selection. Pkt. 10c; oz. 80c; ¼ lb. \$2.40.

**JOHN BAER**—An early variety which is rapidly gaining in popularity. The fruits are uniform, entirely free from core and do not burst when ripe. The John Baer is of a bright red color and is very attractive. Pkt. 5c; oz. 30c; ¼ lb. 95c.

**YELLOW PEAR**—Pear shaped; yellow. Pkt. 10c; oz. 50c; ¼ lb. \$1.50.



**Certified Marglobe.**

**SPARKS EARLIANA**—Coming into the market before any other sort, it commands top prices. The fruits are solid, uniform in shape, and of a rich bright-red color. They are of good flavor and contain few seeds. Pkt. 5c; oz. 25c; ¼ lb. 90c.

**MARGLOBE**—A main crop scarlet fruited variety. Introduced by the U. S. Department of Agriculture as wilt resistant. Fruit is medium size, smooth, solid and globular in shape. A heavy yielder with a small seed cavity. Pkt. 5c; oz. 35c; ¼ lb. \$1.20.

**CERTIFIED MARGLOBE**—In addition to our regular standard bred stock of this variety, we have a limited supply of Certified Seed. This seed was produced under the supervision of and officially inspected by the Pennsylvania Department of Agriculture. Each ¼ and ½ pound package is accompanied by a certificate from the Pennsylvania Department of Agriculture as respects excellency of stock, purity of type and freedom from disease. Packages bear the great seal of the state of Pennsylvania.

The Marglobe is recognized as the most popular variety now being grown and is undoubtedly the best of all recent introductions. Similar to the Globe but wilt-resistant and larger; more productive; small seed cavity; smooth and red. The perfect tomato for canning and garden cultivation. Pkt. 10c; ¼ lb. \$2.00.

# Bulbs for Spring Planting

## CANNA MIXTURE



This is our special mixture of Red, Orange and Yellow, both green and bronze leaf cannas. They are sure to please. Each 5c; doz. 50c.

## DAHLIAS

MIXED COLORS—We have a fine lot of these tubers. They will produce a riot of beautiful colors. 10c each; 3 for 25c; 75c dozen.

## GLADIOLUS

There is no more beautiful flower than the Glad. They make wonderful cut flowers and are easy to grow. Our bulbs will produce large blooms on extra long spikes with a fine range of color. Square Deal Mixture—Large size bulbs, 10c each; 3 for 35c; 75c dozen.

## Roses-Bush



**EVERYBLOOMING HYBRID TEAS**—These bush roses are strong, two-year-old full grown plants and are not to be compared to the cheap roses grown in hot houses.

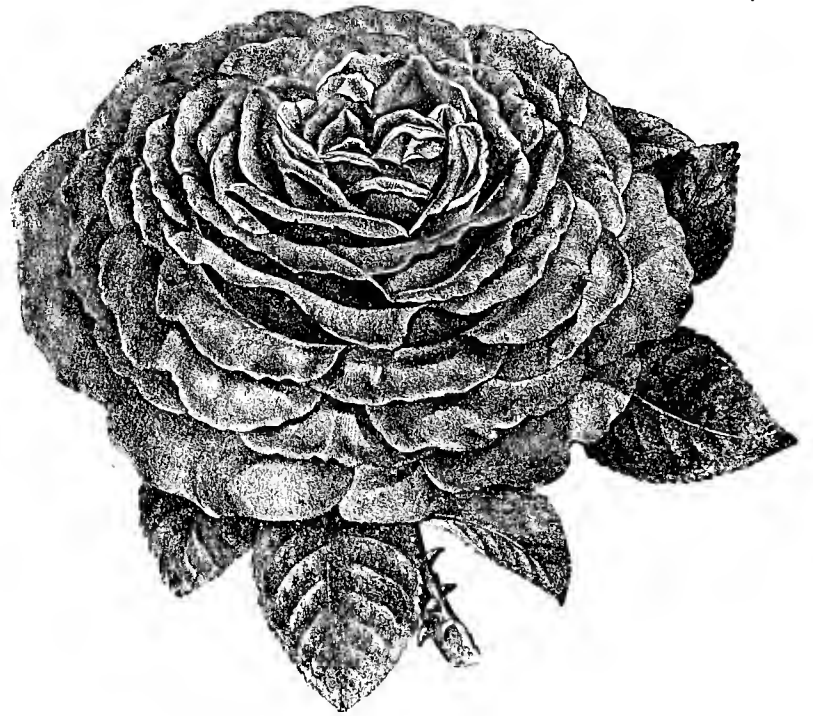
**KAISERIN AUGUSTA VICTORIA**—This is one of the most beautiful Roses grown. Its extra large, exquisitely formed flowers are borne singly on strong upright stems, making it very popular as a cut flower. Buds are long and the flowers very full, deep and sweet scented. Color soft white, slightly tinged lemon-yellow. Each 50c postpaid.

**GRUSS AN TEPLITZ**—Dark rich crimson, passing to velvety fiery red. An exceptionally free bloomer and one of the brightest colored red Roses grown. The canes are strong and vigorous, producing blooms constantly from June till frost. An almost continuous bloomer. Each 50c, postpaid.

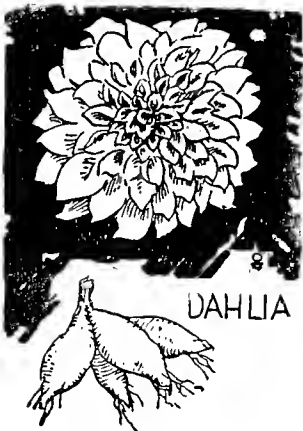
**RADIANCE**—Brilliant rose pink, extra hardy, vigorous and prolific; one of the best all-around garden Roses. Each 50c postpaid.

**RED RADIANCE**—Similar in all respects to the Radiance, differing only in color, this being a fine rich red which does not fade nor dull with age. We recommend this variety for its constant and abundant blooming habit, for its healthy growth, rich color and delicate fragrance. Each 50c postpaid.

**LUXEMBOURG**—Coppery yellow. One of the best yellow Roses. Each 50c postpaid.



Red Radiance



DAHLIA

## Climbing Roses

**CLIMBING AMERICAN BEAUTY**—Rich red, very fragrant. Vigorous grower and a prolific bloomer, having hundreds of perfect season. Each 50c postpaid.

**PAUL'S SCARLET CLIMBER**—No other rose in any class can compare with it for brilliancy of color, which is a vivid scarlet. Its medium size bloom makes a brilliant display during a long flowers open at one time. Each 50c postpaid.

Spray Roses with—

### FUNGTROGEN

Controls Mildew and Black Spot. 1/2 pint 75c.

### INSECTROGEN

Kills most leaf eating insects. 1/2 pint \$1.00.

### BLACK LEAF 40

Kills Aphis (Plant Lice). Oz. 35c.



**KILL INSECTS**  
with  
**EVER GREEN**



**EVER GREEN**  
Non-Poisonous Insecticide  
**KILLS INSECTS**  
Both Chewing and Sucking Types



**ORDER**  
**EVER GREEN**  
to protect your flowers  
from insects

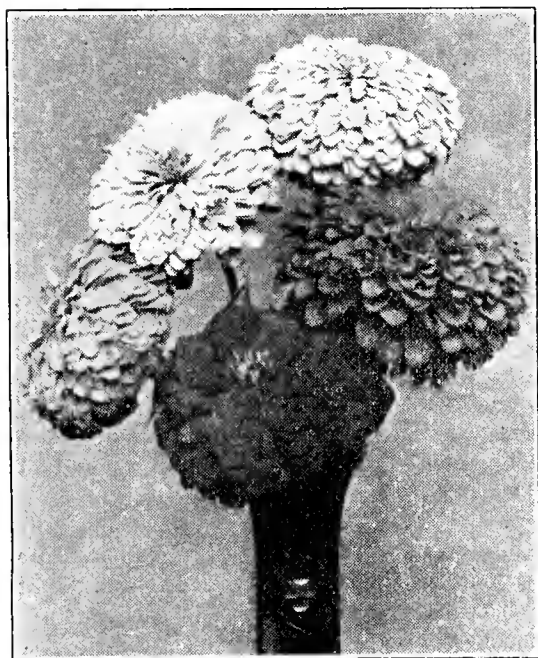
**F  
L  
O  
W  
E  
R**



**S  
E  
E  
D  
S**

## SAY IT WITH FLOWERS

No garden is complete without flowers. No home is so beautiful but what something is lacking without flowers. The beauty of a soft green carpet of grass is enhanced by a bed of waving flowers. Flowers speak a language of beauty that is understood by all.



Giant Double Zinnias

## ZENNIAS

Marvelous Blooms of Immense Size—Many Brilliant Colors.

**GIANT DOUBLE MIXED ZINNIAS**—Glorious huge flowers that will brighten any garden. What could be more desirable than these Giant Double Mixed Zinnias? They are easily grown and make a brilliant display from mid-summer until frost. The individual blooms are massive and well formed. They are carried on strong stems and therefore are valued as much for cutting as for garden display. Plants grow from 2 to 3 feet tall. Pkt. 10; ¼ oz. 35c.

**ZINNIA DWARF DOUBLE LILLIPUT MIXED**—A charming dwarf Zinnia excellent for low borders or edgings. The plants grow to a height of about 12 inches and produce a bounteous supply of very double pompom flowers about 1½ inches across. The colors are bright and well varied. Pkt. 10c; ¼ oz. 35c.

## ASTERS

**GIANT COMET OR CREGO**—Plants robust, about two feet high. Flowers large, double and well formed, making a fine variety for all purposes. Pkt. 10c.

**QUEEN OF THE MARKET**—These well-known, early-flowering Asters are of a branching habit, about 18 inches high, and one of the most useful types for early market purposes. Pkt. 10c.

**QUILLED ASTER**—Of the Japanese Needle type and entirely distinct from other varieties. Plants grow about 20 inches high and bear an abundance of flowers on long stems. A very free bloomer. Pkt. 10c.

**HEART OF FRANCE**—Rich dark red. Plants about 2 feet high, branching habit. Flowers medium size. Pkt. 10c.

## Flower Seed, Pkts. 10c

### MIXED COLORS

- |                       |                      |
|-----------------------|----------------------|
| Bachelors Button      | Larkspur, Mixed      |
| Balsam, Mixed         | Marigold, African    |
| Balloon Vine          | Marigold, French     |
| Calliopsis            | Mignonette, Sweet    |
| Canterbury Bell       | Morning Glory        |
| Candytuft             | Morning Glory, Impl. |
| Castor Bean           | Jap.                 |
| Calendula             | Mourning Bride       |
| Cosmos, Mixed         | Moon Flower          |
| Cockscomb, Mixed      | Poppy, California    |
| Cypress Vine          | Poppy, Shirley       |
| Daisy, Swan River     | Pansy                |
| Daisy, English Double | Pansy, Mixed         |
| Everlasting           | Phlox, Mixed         |
| Forget-Me-Not         | Phlox, Star          |
| Four o'Clock          | Portulaca, Single    |
| Fox Glove             | Portulaca, Double    |
| Gaillardia            | Pink, Chinese        |
| Globe Amaranth        | Snapdragon           |
| Hollyhock, Double     | Stock, Mixed         |
|                       | Verbena, Mixed       |

### NASTURTIUMS

- NASTURTIUMS**—Dwarf mixed. Pkt. 5c; oz. 15c.  
**NASTURTIUMS**—Tall mixed. Pkt. 5c; oz. 15c.

### SPENCERS SWEET PEAS

**SPENCERS SWEET PEAS**—In the following separate colors: Orange, blue, crimson, rose, cream pink, pink and white-lavendar. Pkt. 10c.

**SPENCERS MIXED SWEET PEAS**—If you are going to have sweet peas, why not plant the Spencer varieties and have the best? The seeds cost a little more but they require no more land nor labor and the flowers are much larger and much more beautiful. If you will try the Spencers you will be so well pleased with them that you will plant them every year hereafter. Our mixture shows a wide range of beautiful colors. Pkt. 5c; oz. 15c.

### PETUNIAS

- NANA ERECTA VIOLACEA**—Deep violet, extra. Pkt. 10c.  
**NANA ERECTA**—Mixed, very fine. Pkt. 10c.

# Alfalfa Seed

HIGH QUALITY—KNOWN ORIGIN

Prices Are F. O. B. Coffeyville and Subject to Market Fluctuations.

We buy all our seed direct from the grower therefore we are able to quote you **LOWEST PRICES**, as well as furnish you with the information as to where all our seed is grown. We do our own recleaning which enables us to furnish you with seed running better than 99 per cent pure and containing **NO NOXIOUS WEED SEED**. For the last several years we have secured alfalfa seed from Harper County, Oklahoma which has given the very best of satisfaction in this locality. It produces vigorous stands that give lasting results. Big yields and fine quality. Harper county is located about 250 miles west of us in the northern tier of Oklahoma counties bordering colder than ours makes their seed more winter hardy. These fields are young, and alfalfa blight or wilt is unknown. The same is true of army worm and other insect pests. We unhesitatingly recommend this seed as being hardy, vigorous, disease free and well adapted for our locality. Plump, bright color seed of high purity and germination—\$8.50 Bushel.

## Home Grown Alfalfa

We have a limited stock of good quality, home grown Alfalfa Seed which we are pricing while it lasts at—\$8.50 Bushel.

## Red Clover

For Quantity Prices See Enclosed Price List

Is one of the best crops for building up worn-out soil and for rotating to keep soils from becoming run down. The common mixture for hay and pasture is six pounds of Red Clover and eight pounds of Timothy per acre. Be extremely careful in the selection of your seed. Buckhorn is very common in Red Clover and should be avoided. Our best grade is selected especially for purity and you can depend upon it. When sown alone it is broadcast at the rate of 6 to 8 pounds to the acre. Lb. 20c.

## White Clover

White Clover is excellent for pasture and is especially valuable for mixing with Kentucky Blue Grass both for lawns and pasture. A few pounds of White Clover should be in all permanent grass seed mixtures, as it helps fill up the bare spots and is very nutritious. It is very hardy and is a perennial. Sow 3 to 6 pounds per acre. Lb. 60c.

## Alsike Clover

Alsike is especially valuable for growing on wet or swampy land. If you have a piece of land that is too damp for alfalfa or other clovers or grass, sow a mixture of about four pounds of Alsike Clover and ten pounds Timothy Seed. This will make an excellent crop of hay. Alsike Clover is very hardy, is perpetual, will withstand drought and will not winter kill. About six pounds will sow an acre, and as the seed is very fine it should be covered only slightly. For bottom lands needing drainage but not subject to overflow, an excellent mixture is as follows: Four pounds of Red Clover, two pounds of Alsike Clover and ten pounds of Timothy. Lb. 20c.

## Alsike and Clover Mixed

You can sow this nutritious heavy yielding combination at a very low cost this season. Our mixture is made up of our regular stock of Alsike and Timothy and contains no noxious weed seed. We use the full 25% Alsike to 75% of Timothy, mixture, which assures you of getting just what you pay for and seeding just the proper proportions. Alsike and Timothy are naturally adapted to a mixture. They mature at the same time and last for several years. Price lb. 10c.



# Sweet Clover

**WHITE BLOSSOM SWEET CLOVER**—For soil improvement and as a pasture crop Sweet Clover cannot be excelled. It is well adapted to a variety of soils but does best on a limestone soil or soil that has been limed, yet it is known to thrive on some of the poorest soils and in the most unfavorable places. Our Sweet Clover Seed is all adapted home grown seed. Prices \$3.60 bushel.

## Unhulled Sweet Clover

This is white blossom and is recommended for winter sowing. Weight is 30 lbs. to the bushel. Price \$1.50 bushel.

## Yellow Blossom Sweet Clover

This is preferred by some on account of its earliness. It is about two weeks earlier than the White but does not grow quite as tall, and not as heavy or as coarse. Better than white for hay. Price \$3.90 bushel.

## Japan Clover or Lespedeza

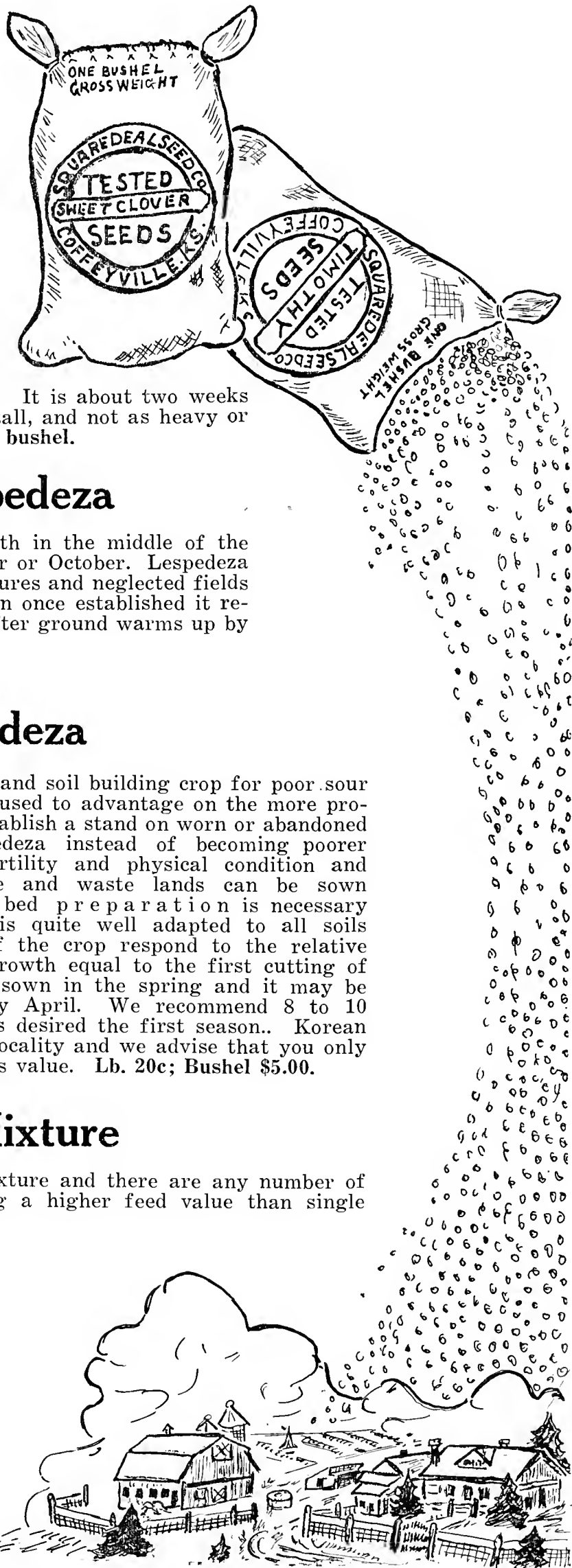
Lespedeza is a summer annual that begins its growth in the middle of the spring, but does not reach maturity until September or October. Lespedeza is a legume, especially adapted to old, worn-out pastures and neglected fields—builds them up and makes them profitable. When once established it re-seeds itself from year to year. Sow in the spring after ground warms up by scarifying with a disc harrow. Lb. 20c.

## Korean Lespedeza

A larger growing type of Lespedeza. Great pasture and soil building crop for poor, sour soils. Although this wonderful new legume may be used to advantage on the more productive soils, its greatest merit is the ability to establish a stand on worn or abandoned farm land. Such lands when sown to Korean Lespedeza instead of becoming poorer each year, will gradually be improved in both fertility and physical condition and will make surprising returns in pastures. Idle and waste lands can be sown easily and cheaply. No great amount of seed bed preparation is necessary and generally not desirable. Korean Lespedeza is quite well adapted to all soils and is known to grow well on acid soils. Yields of the crop respond to the relative fertility of the soil. On moderately fertile land a growth equal to the first cutting of good Red Clover may be obtained. Korean is best sown in the spring and it may be sown with oats or following oats in March or early April. We recommend 8 to 10 pounds of seed to the acre where a full growth is desired the first season. Korean Lespedeza is still in the experimental stage in this locality and we advise that you only try a small amount until it has further proven its value. Lb. 20c; Bushel \$5.00.

## S. D. Pasture Mixture

We have a lot of inquiry for a good pasture grass mixture and there are any number of good ones. Mixture are generally rated as having a higher feed value than single pasture crops. In sowing a mixture you will no doubt find some of the grasses more adapted to your soil and needs than others. Then in your future sowing you could use a larger percentage of the varieties which had proven their adaptability. Before you sow a mixture be sure you know what is in it or you may get a start of noxious weeds that will be hard to get rid of. Our S. D. Mixture is made up out of our regular stock of the best grade of seed in the following proportions:—7 lbs. Orchard Grass, 3 lbs. Red Top Grass, 2 lbs. English Blue Grass, 3 lbs. Timothy, 3 lbs. Kentucky Blue Grass, 2 lbs. Red Clover. The amount given is the quantity usually sown per acre. Price lb. 15c.

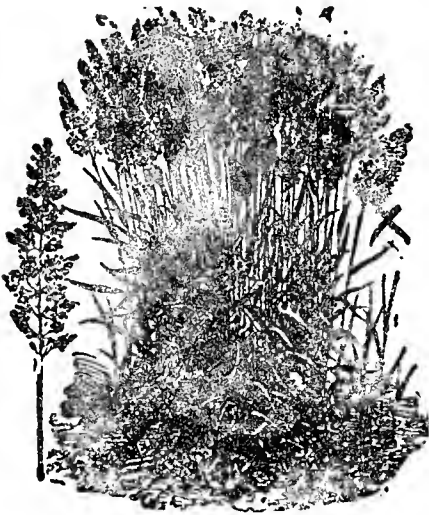


For quantity prices see enclosed price list.

## Grass Seed

Prices Are F. O. B. Coffeyville and Subject to Market Fluctuations.

**TIMOTHY**—As a crop of hay, Timothy is probably unsurpassed by any other kind of grass. It is greatly relished by all kinds of stock, especially horses; yields more nutritious matter than any other forage plant or grass. Being an early grass it is well adapted to spring and summer grazing, too. Sow 10 to 12 pounds to the acre. It is commonly sown with Red Clover at the rate of 8 pounds or Timothy and 6 pounds of Clover to the acre. **Lb. 6c.**



Red Top Grass

**KENTUCKY BLUE GRASS**—This has long been the standard grass in America for both lawns and pastures. There are a good many grass mixtures on the market, but the base of all good ones is Kentucky Blue Grass. Two parts of Kentucky Blue Grass and one part of White Clover make a very good mixture for lawns. For lawns one pound should be sown for every 200 square feet or for every plot 10 by 20 feet. Kentucky Blue Grass thrives best on limestone soil and although somewhat slow in starting it is permanent when once established. When sowing for pasture from 14 to 20 lbs. should be sown per acre. **Lb. 30c.**

## Lawn Grass

**QUICK GREEN LAWN GRASS MIXTURE**—Best for Quick Results—We consider this mixture better than straight Blue Grass. It is made up principally of Kentucky Blue Grass, White Clover and some other grasses that will grow rapidly and make a good showing immediately. These coarser grasses will also protect the Blue Grass and enable it to get a good start. The Kentucky Blue Grass and White Clover will eventually drive out the other grasses and make a fine lawn. Sow 1 lb. to 200 square feet. A good lawn is hard to secure, but when you have produced one from our QUICK GREEN MIXTURE you will be convinced that it can be done. 1 lb. 30c; 5 lbs. \$1.25.

For quantity prices see enclosed price list.



**CYCLONE SEEDER**—Sows all kinds of seeds and grain perfectly; will last a lifetime. Each **\$2.25.**

**HORN SEEDER**—Sectional Tube Style. Has a heavy canvas bag with straps to go over shoulder. Price **\$1.00.**

**ENGLISH BLUE GRASS or MEADOW FESCUE**—We regard this as one of the most valuable grasses as it adapts itself to different conditions of soil and climate. Especially suited for permanent pasture. It gives a large amount of early and late pasture. It is a persistent grower; its roots penetrate deeply; it does well on wet or dry bottoms, hillsides, gravelly clay, and loamy soils. It never freezes out or winter-kills and is not easily affected by drouth. Sow 15 to 25 pounds per acre. **Lb. 8c.**

**RED TOP**—Grows well in all soils, whether sandy, thin, dry lands or rich, wet lands. It is one of the most satisfactory grasses that can be sown; a fine pasture grass and is well suited for meadow. It sends out shoots at the base that take root at every joint, forming a dense, thick sod. Red Top is of great value for sowing in gullies or in soils that are inclined to wash from heavy rains. Sow 10 pounds to the acre. **Lb. 11c.**

**ORCHARD GRASS**—In my opinion this is by far the best permanent pasture grass for this section. It does well on all kinds of soil and is the only grass I know of that does well in our sandy soil. It has been said that this part of the state is not so well adapted for dairying because of the lack of pasture. I know of several farmers and dairymen in this vicinity who have Orchard Grass pastures which have been established several years; it has proven very satisfactory. We get the seed from Missouri, where Orchard Grass is considered as equal to, if not superior to Kentucky Blue Grass for permanent pasture. **Lb. 10c.**

**BERMUDA**—Bermuda is a Southern grass. It is extensively cultivated in this section of the country for lawns. It is a small, creeping, hardy perennial, which thrives on nearly all our soils, though, like other grasses, it gives better results on richer soils. It grows vigorously during the hot summer months when other grasses are parched and dead. The seeding should not be done too early, as the seed will not germinate if sown before the weather and ground have become warm. **Lb. 40c.**



A Quick Green Lawn.

The best inoculation for all legume seeds. Means better crops, better soil, less fertilizer expense.

By reasons of the patented stopper, which admits air and excludes contamination, FARM-OGERM is guaranteed for five years.

Price for clover and alfalfa, 1/2 bu. 60c; bu. \$1.00; 2 1/2 bu. \$2.25.

THE STANDARD INOCULATION  
**FARM-OGERM**  
 HIGH BRED NITROGEN GATHERING BACTERIA



# Tested Seed Corn

Prices are F. O. B. Coffeyville and subject to market fluctuations.

Our seed corn is all grown within a few miles of Coffeyville by reliable rowers. It is all tipped, butted and graded over our Morecorn power corn grader and tested for germination by the State Seed Laboratory. We can supply the following varieties:

**GOLDEN MORTGAGE LIFTER**—We have been growing and selling Golden Mortgage Lifter for several years now and every year we add a host of names to our list of satisfied customers. If you have never grown this variety, be sure and try it this year. We know you will be pleased. The corn is a deep Golden Yellow. Very deep grain with a very small red cob. Always well filled at both tip and butt. This is the heaviest yielding corn ever shelled. A bushel of Golden Mortgage Lifter on the ear will yield 58 to 60 pounds of shelled corn. Matures in 95 to 105 days. Price \$1.75 per bushel.

**MIDLAND YELLOW DENT**—(110 Day) This is a medium sized variety. The kernels are a rich golden color and are slightly dented. Midland is recommended by the Kansas State Agricultural College as being particularly well adapted to Southeast Kansas. Ask for prices.

**IOWA GOLD MINE**—(110 Day) A heavy yielding big eared corn of bright golden yellow color. Price \$1.50 per bushel.

**HICKORY KING**—(110 Day) This is an entirely distinct variety amongst the white corn, combining the largest grain with the smallest cob. It does well on any soil. Ask for prices.



Grohoma—New Wonder Crop

## Grohoma

The New Wonder Grain.

This wonderful new grain crop is a combination of Kafir and seeded ribbon cane, producing a larger head and a larger grain than Kafir together with a stalk and foliage far superior to any sorghum ever produced. It has been known to yield as high as 50 bushels of grain and six tons of forage to the acre. A sure producer on upland or bottom land. Wet or dry season. Price per pound, 50c.

## Certified Hegari

Grain is white and similar to White Kaffir, but is two to four weeks earlier. More drought resistant than Kaffir and very dwarf, growing to a height of four to five feet. Yield equal to white kaffir. Large compact heads. Pound, 10c; 3 lbs. 25c.

## Pop Corn

**SOUTH AMERICAN DYNAMITE**—This is a new variety of yellow pop corn, which is very much in demand wherever a superior quality of popping corn is desired. The yellow kernels pop to a very large size. It is absolutely hullless and has a fine flavor. Price 10c per lb.

**WHITE MUSHROOM or OZARK QUEEN**—The big white grains pop to an extra large size. Hullless and is deliciously tender. Pops fully as large as the Dynamite. 10c per lb.

**SEED CORN DISINFECTANT**—Treat your Field and Sweet Corn seed with Semesan Jr. Price 1 lb. \$1.75.

## Certified Kaffir

**BLACK HULL WHITE**—This seed was inspected in the field by representatives of the Kansas Crop Improvement Association and is certified by them as being pure stock and of extra fine quality. This variety will outyield the ordinary kaffir and being dwarf will mature earlier. Prices: Pound, 10c; 3 lbs. for 25c.

## Flax

**BISON**—Our seed is home grown one year from certified Bison, from North Dakota. Price \$2.00 bu.

|   |     |
|---|-----|
| Dwarf Yellow Milo, lb.....                                | 5c  |
| Feterita, lb.....   | 5c  |
| German Millet, lb.....                                    | 5c  |
| Dwarf Essex Rape, lb.....                                 | 10c |
| Honey Drip Cane, lb.....                                  | 5c  |
| Silver Drip Cane, lb.....                                 | 5c  |
| White Jumbo Peanuts, lb.....                              | 20c |
| Mammoth Russian Sunflowers, lb.....                       | 15c |
| Red Top and Orange Cane for hay. See enclosed price list. |     |

For quantity prices see enclosed price list.



Mammoth Long Red Mangel  
Pkt. 5c; 1/2 lb. 35c.

## Sudan Grass

Prices are F. O. B. Coffeyville and subject to market fluctuations.

The heaviest yielding, most drought-resisting hay and pasture grass ever introduced. Sudan grass is sown in the spring as soon as danger of frost is past, either in row or broadcast. If sown in the spring it will yield an average of two cuttings of hay. It will produce a crop of hay if sown as late as 60 days before the average frost in the fall.

While Sudan makes a most valuable hay crop, its value as a summer pasture crop should not be overlooked. It is doubtful if any other pasture will equal it, especially for cows and hogs. For hay sow 20 to 25 pounds to the acre. For pasture 30 to 35 pounds. \$3.00 per 100 lbs.



Sudan on the Ora Madden Farm near  
South Coffeyville, Oklahoma.



Field of Soy Beans on the Geo. Estes farm near Liberty, Kansas. Note roots showing nodules.

## Soy Beans

(Ask for Prices—Inoculate This Seed)

**BLACK WILSON**—Soy beans are very erect, growing with from one to six stems or more, branching out from the roots, and reaching a height of 1½ to 3½ feet; seldom falling down, except in very rich, loose soil. Soy beans are a remarkable drouth-resister and will do comparatively well on thin land, however, they respond very readily to moisture and rich land. Planting should not be done until the weather is warm and after corn planting.

**YELLOW MANCHU**—An early maturing yellow seeded variety that produces good yields of grain. We recommend this variety for a combination hay and grain crop. Ask for prices.

**VIRGINIA**—This is distinctly a hay variety, being one of the best for this purpose. The quality of the hay is good since the stems and branches are fine and well covered with leaves. Require a medium season to mature. Ask for prices.

## Cow Peas

(Ask for Prices—Inoculate This Seed)

**BLACK-EYED PEAS**—A very fine table pea much in demand by market gardeners. Pods are of good size and the peas are crowded in the pod. Also grown for stock.

**WHIP-POOR WILL**—Yields an enormous crop. Brown speckled pea. Bushy variety.

**NEW ERA**—Earlier than the above, but does not yield so well.

For quantity prices see enclosed price list.



# Orchard Brand Spray Material

Orchard Brand Insecticides are a standard product. If you buy insecticide in large quantities, get our prices. No need to send away for insecticides. Poison cannot be mailed. Ask for our free spraying guide.

**ARSENATE OF LEAD**—The most universal arsenical poison for control of chewing insects. 1 lb. 30c; 4 lb. pkg. 90c.

**BORDEAUX MIXTURE, POWDERED**—The standard fungicide on apple for scale control at early spray; for leaf curl on peach before blossoming, and grapes throughout the season. 1 lb. pkg. 25c; 4 lbs. 75c.

**ARSENITE OF ZINC**—The most active arsenical poison that can be used in the control of potato beetle and striped flea beetle on tomato plants with consistent safety. Sticks to the vines. 1 lb. pkg. 30; 4 lbs. 90c.

**DRY LIME SULPHUR**—A convenient and effective remedy for controlling scale insects in the dormant period. Can be used in all spraying operations where it is safe to use liquid Lime Sulphur. 5 lb. pkg. \$1.25; 12½ lbs. \$2.00.

**NICOTINE SULPHATE OR "BLACK LEAF 40"**—The insecticide so highly recommended by experimental stations. Destroys aphids (plant lice), thrips, leafhoppers on all trees, bush and vine fruits, vegetables, field crops, flowers and shrubs, without injury to foliage. You can not go wrong by ordering Black Leaf 40 for sucking insects. Price: Oz. (makes six gallons spray), 35c; 5 oz. \$1.00; 2 lbs. \$3.35; 10 lbs. \$10.75.

**TOBACCO DUST**—For green and black aphids, fleas, beetles, etc. Splendid fertilizer and preventive for insects on the ground and around roots. For insects on plants, supply with powder-duster or bellows; for worms or grubs in the soil, apply liberally to the surface and rake or strew thickly in drills before planting. Also used as worm preventive in poultry and insect repellent when put in nests. 1 lb. 10c; 3 lbs. for 25c.

**HOFSTRA**—A non-poisonous insecticide for home, farm or store. Kills flies, mosquitoes, ants, bed bugs, roaches, mites, lice, fleas, potato bugs and cabbage worms. Spray Hofstra on flowers, vegetables and shrubs. Pkg. 15c and 60c.

**DUSTING SULPHUR**—For dusting rose shrubs, etc. for control mildew. Pkg. 10c.

**DRITOMIC SULPHUR**—A substantial and efficient fungicide in dry powdered form for spraying on all fruits for the control of rot, rust and scab. 4 lb. pkg. 75c.



## Banner No. 22

### Compressed Air Sprayer

Complete with 2 feet brass extension rod. Heavy four gallon galvanized steel tank, well riveted to stand heavy pressure. Also made entirely of brass.

Galvanized Tank..\$5.95  
Brass Tank.....\$8.95



**ORDER  
EVER GREEN**  
to protect your flowers  
from insects

Kills most plant pests, including even cutworms. Use it freely on tender plants and flowers—it can't burn or otherwise injure them.

1 oz. bottles.....\$0.35  
6 oz. bottles..... 1.00  
Pint bottles (16 oz.)..... 2.00

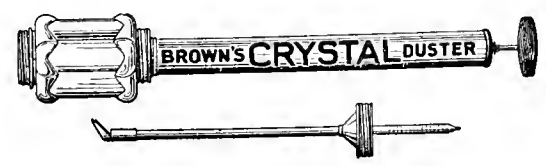
### LIGHTNING C. A. SPRAYER

Same as our Banner No. 22 only lighter. Capacity 3½ gallons. Galvanized only. \$4.00.



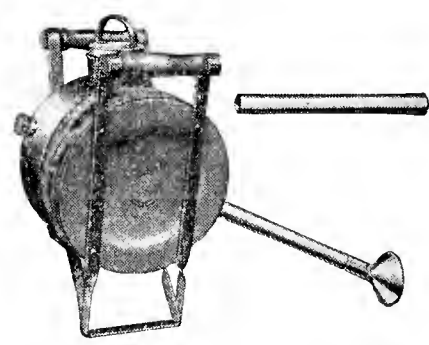
### CONTINUOUS AUTO SPRAY

Capacity 1 quart. Tin cylinder. Glass tank will not corrode. \$1.25.



### CRYSTAL DUSTER

The best small hand duster on the market. Easy to fill. One quart glass container. Long extension and adjustable angle nozzle as illustrated. \$1.50.



### PLATZ "GREEN" HAND DUSTER

Light, compact, sturdy, efficient. Capacity 2-4 quarts. Large powerful bellows. 30" extension with spreader for dusting trees as well as plants. \$6.25.



## Wizard Sheep Manure

Makes All Plants Grow to Perfection.

**LAWNS**—Wizard is absolutely weedless. Produces a thick velvety green turf of lasting beauty. Use 6 to 10 lbs. to 100 square feet and rake into the surface soil.

**GARDENS**—Put new beauty into your plants by mixing a handful of Wizard under each new plant—more for shrubs, vines and trees. For old plants use 12 lbs. per 100 square feet.

**FRUITS AND VEGETABLES**—Wizard produces crisp tender vegetables and big yields of high quality fruit. Use in drills or broadcast 1000 to 1500 lbs. per acre. Prices: 25 lbs. \$1.00; 50 lbs. \$1.50; 100 lbs. \$2.75; ton, \$44.00.



### EASY WAY TO GROW BEAUTIFUL PLANTS

**P**lant one of the Plantabbs in each pot about every two weeks and you'll have the finest flowers you ever grew.

Plantabbs are small, clean, quickly dissolving tablets without odor. Highly concentrated form of nitrogen, ammonia, phosphoric acid and potash in proper balance. Especially good inside where smelly fertilizer cannot be used, but equally effective on roses and other garden flowers.

Everyone who tries Fulton's Plantabbs praises them.

30 Tablets 25c; 75 Tablets 50c;  
200 Tablets \$1.00; 1000 Tablets \$3.50.

FULTON'S  
**PLANTABBS**  
ODORLESS PLANT FOOD TABLETS

### NEW WAY TO KILL GARDEN BUGS

**P**ROTECT your flowers and vegetables this new way. Surprisingly easy! Simply sprinkle with a new kind of non-poisonous powder called PLANTGARD. Not only are bugs, worms and insects killed, but this almost magical powder also fertilizes the ground. No wonder flowers grow larger and brighter colored! Vegetables mature quicker and are more tasty. Yet it costs only a few cents to protect an entire garden bed. Ask for Plantgard today.

*Plantgard*  
FOR GARDEN PROTECTION



## VIGORO

Feed Everything You Grow 5 Lbs.

with this complete,  
balanced diet

**VIGORO**  
Complete plant food



50c

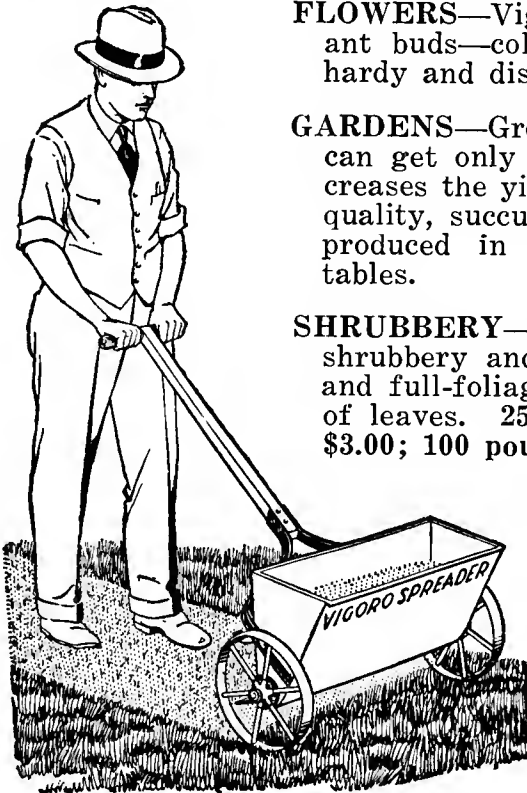


**LAWNS**—Vigoro gives the lawn a smooth, velvety appearance. Unexcelled for starting new lawns, reviving old ones which are bare, yellow or thin in spots and the feeding of established lawns.

**FLOWERS**—Vigoro promotes vigorous and abundant buds—colorful and fragrant flowers. Grows hardy and disease resisting plants.

**GARDENS**—Grows those fresh vegetables that you can get only from your own garden. Vigoro increases the yield, hastens maturity and gives that quality, succulence and flavor which can only be produced in rapidly grown, properly fed vegetables.

**SHRUBBERY**—Vigoro is the ideal plant food for shrubbery and trees. It grows hardy, luxuriant and full-foliaged shrubs—trees vigorous and full of leaves. 25 pound sack, \$1.75; 50 pound sack, \$3.00; 100 pound sack, \$5.00.



### Vigoro Spreader and Seed Sower

For applying Vigoro, Sheep Manure, Lime, Fertilizer and sowing lawn seed. Holds 25 lbs. Vigoro. Spreads 14" wide and operates faster than a lawn mower. \$7.50.

## AA Fertilizers

Ask For Quantity Prices.

|  | 125-lb. Bags |
|--|--------------|
| "Agrico" for Truck 5-10-5.....         | \$2.40       |
| "Agrico" for Potatoes 4-8-6.....       | 2.20         |
| "Agrico" for Tomatoes 2-12-6.....      | 2.00         |
| 20 per cent Superphosphate 0-20-0..... | 1.75         |
| Steam Bone Meal 1-29-0.....            | 2.25         |



**KILL INSECTS**  
with  
**EVER GREEN**



**ORDER EVER GREEN**  
to protect your flowers  
from insects



# Field Seed Price List

Coffeyville, Kansas, February 1st, 1932.

PRICES are subject to market changes, and are F. O. B. Coffeyville, buyer to pay freight, express or parcel post charges.

NOTICE. It is mutually agreed and understood that any seeds or other goods bought from us may be returned at any time within ten days after receipt, if not satisfactory, and money paid for them will be returned, but we do not and cannot in any way warrant the stand or the crops as they depend on so many conditions beyond our control.

## ALFALFA. Hardy Non-Irrigated

Packed in our one-bushel printed bags. Bags Free.

|                              | Per Bu. | 100 Lbs. |
|------------------------------|---------|----------|
| Home Grown, Extra Fancy..... | \$ 8.50 | \$14.15  |
| Okl. Grown, Fancy.....       | 8.50    | 14.15    |

## SWEET CLOVER, White Blossom

Scarified Seed packed in our one-bushel printed bags. Bags Free.

|                                  |      |      |
|----------------------------------|------|------|
| Unhulled (30-lb. bu.).....       | 1.50 | 5.00 |
| Hulled and Scarified, Fancy..... | 3.60 | 6.00 |

## SWEET CLOVER. Yellow Blossom

|                                   |      |      |
|-----------------------------------|------|------|
| Sweet Clover, yellow, hulled..... | 3.90 | 6.50 |
|-----------------------------------|------|------|

Our Sweet Clover is home grown.

## CLOVERS

Red Clover and Alsike packed in our one-bushel printed bags. Bags Free.

|                                      | Per Bu. | 100 Lbs. |
|--------------------------------------|---------|----------|
| Red Clover, Fancy Home Grown.....    | \$12.00 | \$20.00  |
| Alsike, Fancy Wisconsin Grown.....   | 12.00   | 20.00    |
| White Clover, Extra Fancy, Wisc..... | 30.00   | 50.00    |
| Japan Lespedeza.....                 | 5.00    | 20.00    |
| Korean Lespedeza.....                | 5.00    | 20.00    |
| Alsike and Timothy mixed.....        |         | 9.50     |

## FIELD PEAS & BEANS

|                            |        |
|----------------------------|--------|
| Whippoorwill Cow Peas..... | Bu.    |
| New Era Cow Peas.....      |        |
| Black Eye Cow Peas.....    | Prices |
| Wilson Soy Beans.....      |        |
| Virginia Soy Beans.....    | Later  |
| Manchu Soy Beans.....      |        |

## KAFFIR

Certified Genuine Black Hull White Kaffir and Dwarf Hegari grown under the supervision of the Kansas and Oklahoma Crop Improvement association and Certified by them.

|  |         |
|--|---------|
| Price 3 lbs. 25c, or \$5.00 per 100 lbs. |         |
| Grohoma.....                             | lb. 50c |
| Kaffir, Standard White.....              | Prices  |
| Milo Maize, Dwarf Yellow.....            |         |
| Feterita.....                            | Later   |
| Cane, Kansas Orange.....                 |         |
| Cane, Black Amber.....                   | in      |
| Cane, Red Top or Shumac.....             |         |
| Cane, Japanese Honey Drip.....           | Season  |

## SEED CORN

|                             | Bu.    |
|-----------------------------|--------|
| Golden Mortgage Lifter..... | \$1.75 |
| Reid's Yellow Dent.....     | 1.50   |
| Iowa Silvermine.....        | 1.50   |
| Midland Yellow.....         | 1.50   |

## GRASS SEED

Timothy Seed packed in our one-bushel printed bags. Bags Free.

|                                     | Per Bu.      | 100 Lbs. |
|-------------------------------------|--------------|----------|
| Orchard Grass, Home Grown.....      | \$1.40       | \$10.00  |
| Red Top, Home Grown.....            | 1.54         | 11.00    |
| English Blue Grass, Home Grown....  | 1.12         | 8.00     |
| Kentucky Blue Grass, Missouri Grown | 2.80         | 20.00    |
| Timothy, Fancy Illinois Grown.....  | 2.70         | 6.00     |
| Bermuda Grass, Arizona Grown.....   |              | 25.00    |
| Sudan Grass.....                    |              | 3.00     |
| German Millet.....                  | ASK FOR      |          |
| Hog Millet, or Hershy.....          | PRICES LATER |          |

## MISCELLANEOUS

|                            | Per Bu. | 100 Lbs. |
|----------------------------|---------|----------|
| Oats, Red Texas.....       | \$ .25  | \$       |
| Buckwheat, Silverhill..... | 2.60    |          |
| Rye.....                   | .65     |          |
| Flax.....                  | 2.00    |          |
| Rape, Dwarf Essex.....     |         | 7.50     |
| Russian Sunflower.....     |         | 7.50     |
| Peanuts, White Jumbo.....  |         | 20c lb.  |

## ONION SETS

|             | Bu.    |
|-------------|--------|
| Red.....    | \$2.85 |
| Yellow..... | 2.85   |
| White.....  | 3.15   |

## CABBAGE & ONION PLANTS

|                                  |        |
|----------------------------------|--------|
| Yellow Bermudas (6,000).....     | \$4.50 |
| White Wax Bermudas (6,000).....  | 4.50   |
| Frost Proof Cabbage (1,000)..... | 2.50   |

## SEED SOWERS—See Catalog

|                       |        |
|-----------------------|--------|
| Cyclone Seeders.....  | \$2.25 |
| Tin Horn Seeders..... | 1.00   |

## SPRAYERS—See Catalog

|                                   |        |
|-----------------------------------|--------|
| 4-Gal. Compressed Air, Galv.....  | \$5.95 |
| 4-Gal. Compressed Air, Brass..... | 8.95   |
| 3½-Gal. Compressed Air Galv....   | 4.00   |
| Continuous.....                   | 1.50   |
| Misty.....                        | .50    |
| Dust Gun.....                     | 1.50   |

## CHEMICALS & INSECTICIDES

See Catalog

|                               |                          |
|-------------------------------|--------------------------|
| Avenarius Carbolineum, Gallon | \$1.50                   |
| Black Leaf 40.....            | 5 oz. \$1.00             |
| 2-lb., \$3.35; 10-lb.         | \$10.75                  |
| Formaldehyde.....             | 1-lb. .50                |
| Rat Scent.....                | pkg. 35c and 50c         |
| Epsom Salts.....              | 3-lb. 25c; 25-lb. \$1.50 |

## POULTRY FEED

|                                     |  |
|-------------------------------------|--|
| Saf-T-Way, Chick Starter and Grower | 10-lb. 35c; 25-lb. 70c; 100-lb. \$2.45     |
| Square Deal Chick Scratch Feed      | 16 lb., 45c; 50-lb., 90c; 100-lb., \$1.75. |
| Square Deal Laying Mash             | 100-lb., \$1.55; 500-lb., \$7.50.          |

|                                | 100 lbs. |
|--------------------------------|----------|
| Chick Grit.....                | \$1.75   |
| Charcoal, coarse and fine..... | 2.70     |
| Swift's Meat Scraps.....       | 2.25     |
| Oyster Shell.....              | .90      |
| Bone Meal.....                 | 2.25     |

## POULTRY SUPPLIES

|                            |        |
|----------------------------|--------|
| Putnam rooder Heater.....  | \$4.75 |
| 54-Hole Chick Feeders..... | 1.35   |
| 30-Inch Chick Trough.....  | .30    |
| 1-Gallon Crock Fount.....  | .50    |

## DAIRY FEED & SUPPLIES

|                           | 100 lbs.            |
|---------------------------|---------------------|
| Kow-Kare.....             | Pkg. 65c and \$1.25 |
| Grange Garget Remedy..... | .65                 |
| Bag Balm.....             | .60                 |

You are cordially invited to come in and look our seed stock over when in Coffeyville. Bring us your seed and planting problems. We are here to serve you, and we will be glad to give you any information we can that will help you. You are under no obligations whatever.

# SQUARE DEAL SEED CO.

Corner Seventh and Union Streets.

Yours respectfully,

CLYDE FRAZIER, Prop.

IN ORDERING PLEASE USE THIS SHEET  
**SQUARE DEAL SEED COMPANY**

Coffeyville, Kansas

Date.....1932

Terms are CASH with Order. No Goods Sent C. O. D.

Mark in square which way you want order sent.

Name .....

Post Office .....R. F. D. No.....

County ..... State.....

Please Do Not Write In This Space

Shipped by .....

Packed by .....

FREIGHT.....

PARCEL POST.....

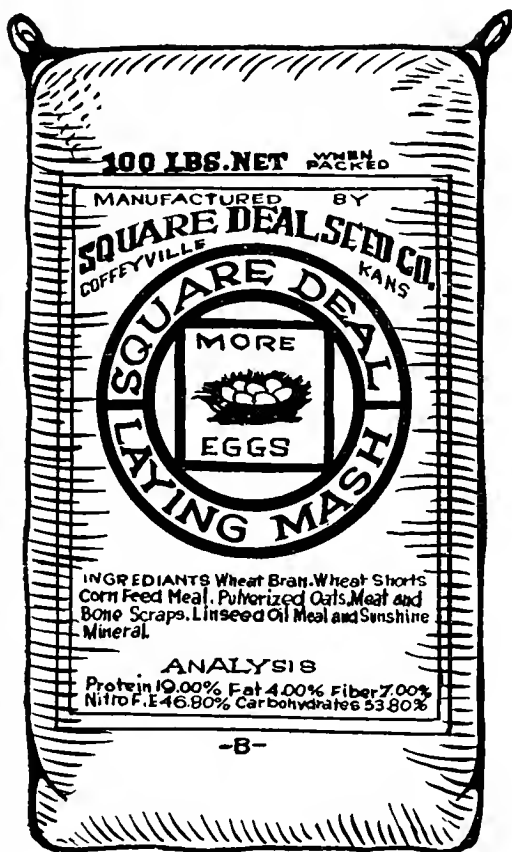
EXPRESS.....

**ABOUT WARRANTING SEEDS.**

It is mutually agreed and understood that any seeds or other goods bought from us may be returned at any time within ten days after receipt, if not satisfactory, and money paid for them will be returned, but we do not and can not in any way warrant the stand or the crop as they depend on so many conditions beyond our control.

| QUANTITY              | NAMES OF SEEDS WANTED | PRICE |  |
|-----------------------|-----------------------|-------|--|
|                       |                       |       |  |
|                       |                       |       |  |
|                       |                       |       |  |
|                       |                       |       |  |
|                       |                       |       |  |
|                       |                       |       |  |
|                       |                       |       |  |
|                       |                       |       |  |
|                       |                       |       |  |
|                       |                       |       |  |
|                       |                       |       |  |
|                       |                       |       |  |
|                       |                       |       |  |
|                       |                       |       |  |
|                       |                       |       |  |
|                       |                       |       |  |
|                       |                       |       |  |
|                       |                       |       |  |
|                       |                       |       |  |
|                       |                       |       |  |
| Total Amount Enclosed |                       |       |  |

(Field Seed Prices on Reverse Side.)



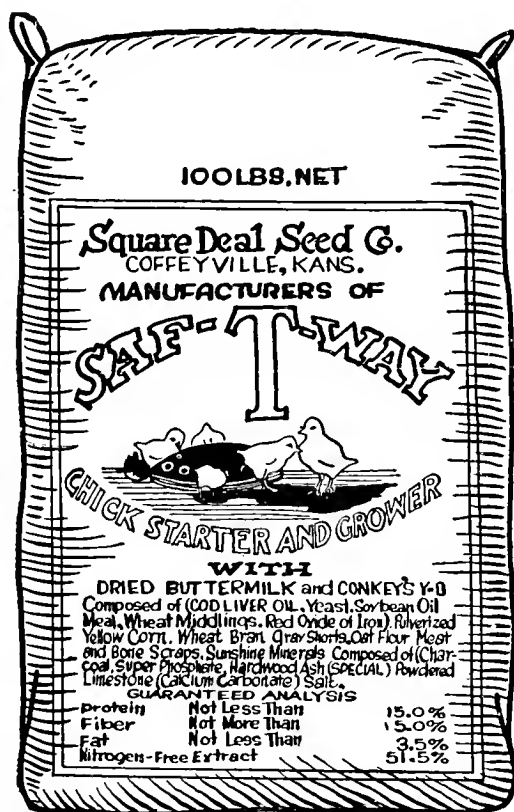
# Square Deal Egg Mash

SQUARE DEAL LAYING MASH is composed of the proper egg making nutrients thoroughly mixed in the right proportion to produce eggs and is now MINERALIZED with SUNSHINE MINERALS, which assures greater fertility and better hatching. Try a few bags. You will be convinced of its merits by the results obtained.



## Start Right with Baby Chicks

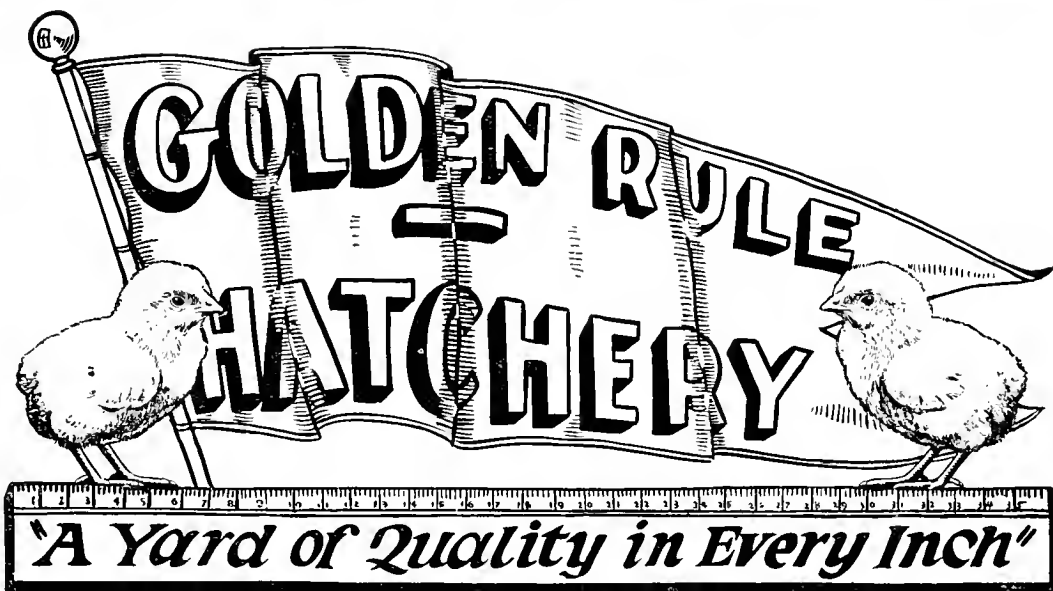
If you want to practically eliminate your chick losses and see your baby chicks make amazingly rapid growth, with no rickets or leg weakness, feed them our



## SAF-T-WAY

### Chick Starter and Grower

Vitalized with Buttermilk, Cod-liver Oil and Yeast. Vigorized with purest Oatmeal and other ground grains plus Meat and Bone Meal. Mineralized with Sunshine Mineral. Packed in 10-, 25- and 100-lb. bags at moderate prices.



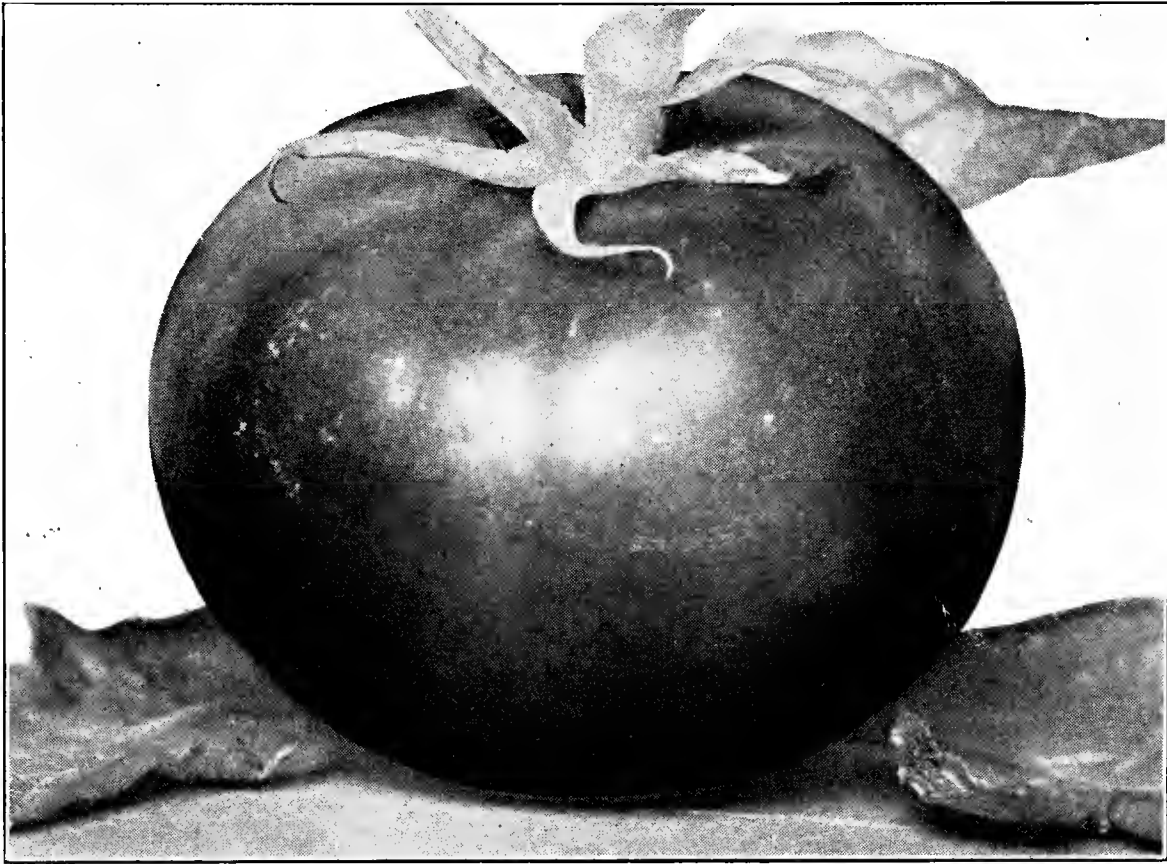
This Modern up-to-date Hatchery Feeds and Recommends

## SAF-T-WAY

You will do well to get their prices on custom hatching and baby chicks.

The Golden Rule Hatchery is located at the corner of Tenth and Moon streets, Coffeyville, Kansas.

# NEW BREAK O'DAY TOMATO



An Extra Early Tomato of the Marglobe Type

**BREAK O' DAY**—A new early wilt-resistant Tomato developed by the U. S. Department of Agriculture. It is an early strain of Marglobe which it resembles in shape and size. Medium size, solid fruits of bright red color which seldom cracks. Our seed is grown from the original 1929 Dr. Pritchard selection.

Square Deal Seed Co.,  
Coffeyville, Kansas,

Central City, Neb.,  
7-20-31.

Gentlemen:

I am sending you by Parcel Post the first one of my Break O'Day Tomatoes from the seed I received from you this Spring. I picked six of Burbanks Earliest tomatoes also today, the first ones. The Burbanks were up and ready to transplant in my hot beds when I received the Break O'Day seed. There was at least a months difference in the two plantings. The Break O'Day is the smoothest early tomato I ever saw.

Yours truly, H. B. WILEY.

Mr. Clyde Frazier, Prop.,  
Square Deal Seed Co.,  
Coffeyville, Kansas.

1006 West Sixth St.,  
Coffeyville, Kansas,  
Jan. 16, 1932.

Dear Sir:

Relative to your inquiry as to my opinion of Break O'Day tomatoes, I wish to state that last year I planted your seeds inside, about March 1, (1931). I reset the plants in the garden about May 1, and the plants grew very rapidly. They began to bloom in less than thirty days and the blooms did not drop off, but tomatoes began to set on and grow very rapidly regardless of the fact that the weather was cool. The vines were yellow with blossoms when moisture was sufficient. The tomatoes began to ripen about July 10th, and the vines continued to bloom and to bear until frost. These plants were set in the garden where years previous I had been unable to get plants to live on account of blight. The Break O'Day is a very good blight resisting tomato. Another outstanding feature of this high quality tomato is that they do not burst open after a rain.

It is my honest opinion that for a good, large, early smooth, meaty tomato, the Break O'Day can not be excelled.

Yours truly, FRANK HOLT.

Customers living at a distance who have never been in our store will find us at the corner of Union Street at Seventh, one block west of the M. K. & T. depot and one block east of the new City Hall. Be sure and call on us this Spring. You will find a friendly welcome at the

## Square Deal Seed Store